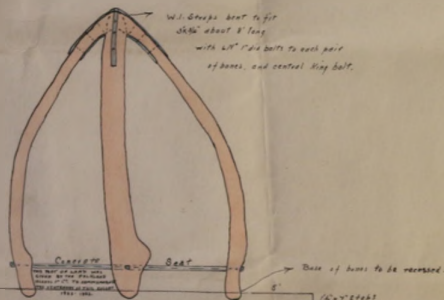
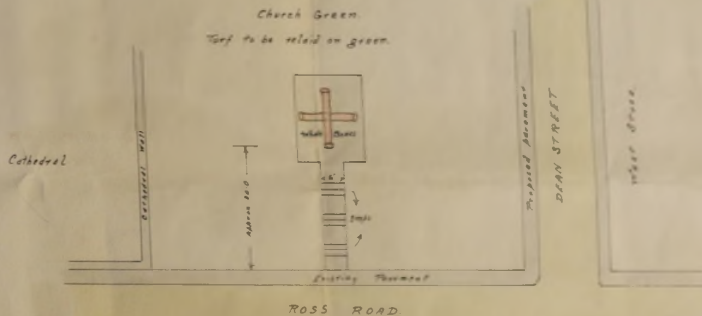


PROPOSED FOUR WAY WHALE BONE ARCH TO BE ERECTED ON THE CHURCH GREEN.



SECTION



PLAN

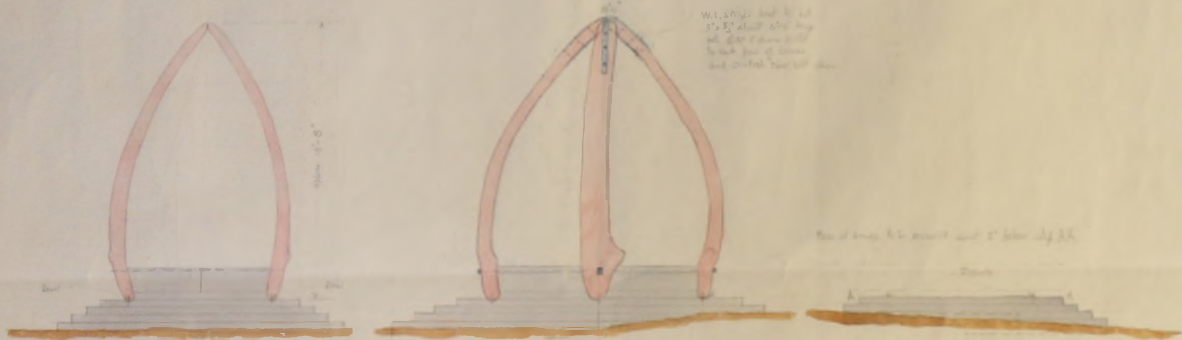
3/6

PORT STANLEY VICTORY GREEN LAY OUT

SKETCH

PROPOSED FOUR WAY WHALE BONE ARCH

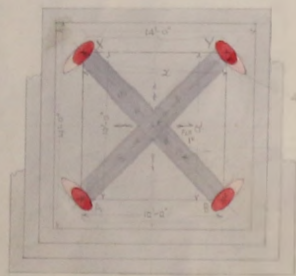
SCALE - 4 FEET TO AN INCH



ELEVATION (N)

DIAGONAL VIEW

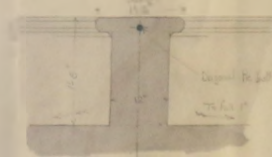
ELEVATION (E)



A-B 10' 0"

C-D 10' 0"

PLAN

45° Grouse hole cut
at the junction
of the arches
1/2" dia. hole at
45°A-B Diameter
10' 0" with 1/2" dia.
hole at 45° from
top. 1/2" dia. hole
at 45° from top.No. of steps to ground
level 12' below top
of arch.Diameter of hole
at junction of arches
1/2" dia. hole at 45°

Detail of joint at 1/2" round cover

DETAIL OF JOINT

NOV 1923