

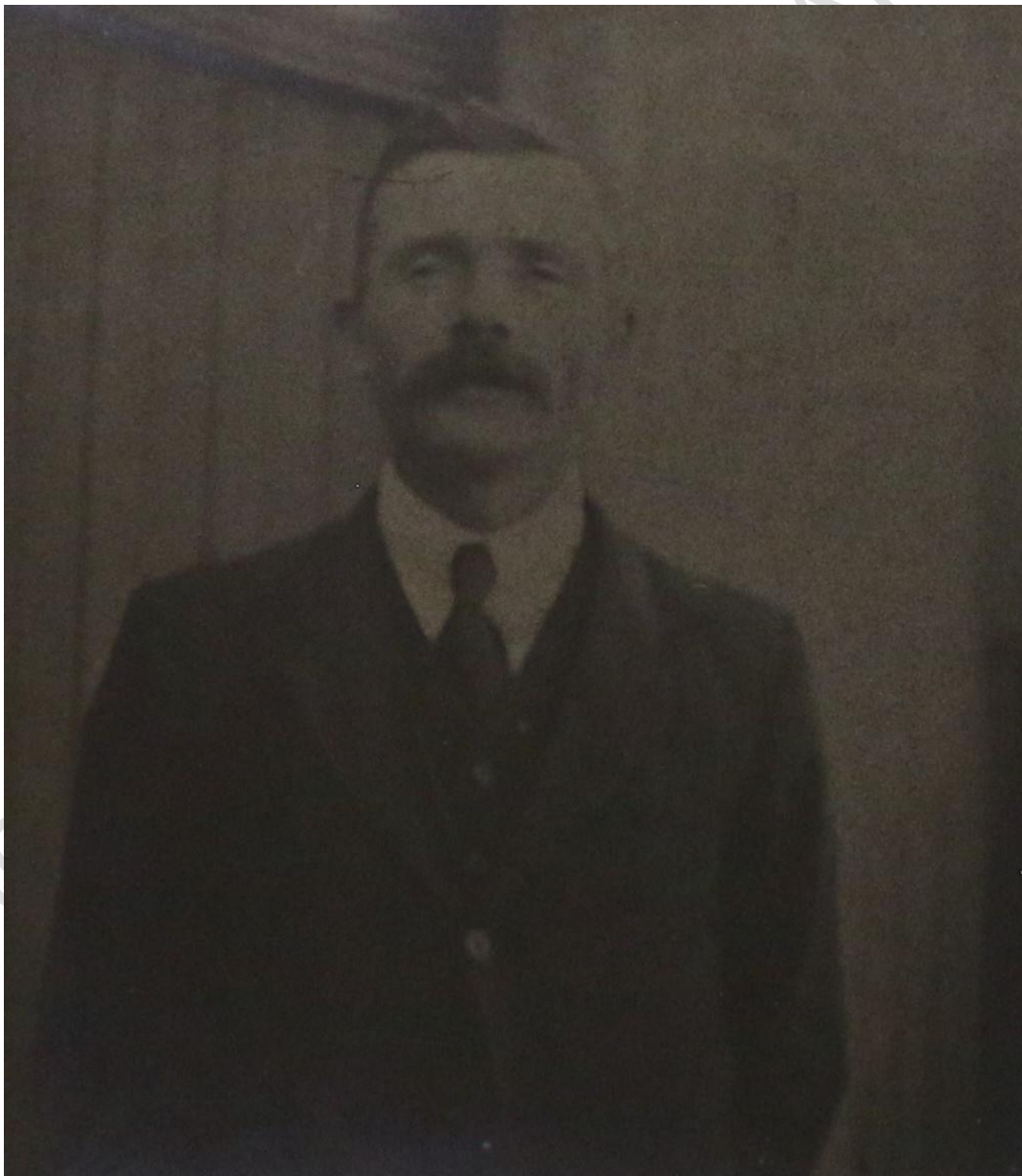
WILKIE FAMILY

NB: The following is prepared from Falkland Islands Registers and files – there may be other family born outside the Falklands. Unless stated otherwise, all dated births, deaths and marriages occurred in the Falklands and all numbered graves are in Stanley Cemetery.

William WILKIE was appointed a carpenter with the Department of Public Works 1 July 1908.

William, a carpenter, was married to **Rebecca WANG** 1 July 1913 at the office of the Registrar General by Edward B Binnie, Acting Registrar General. The witnesses were Charles Sigvardt Wang and Isabella Phoebe Atkins. William's father was recorded as Neil Wilkie, retired and Rebecca's as Charles Sigvardt Wang. William and Rebecca departed the Falkland Islands 9 July 1913 for Liverpool on board the *Orepesa*. They returned 7 January 1914 on board the same vessel.

William, Rebecca and their four children emigrated to the UK 5 April 1921 on board the *Solstrief*.



William in 1921

FIRST GENERATION:

1. **William Charles WILKIE** born 2 November 1914 in Stanley. His father's occupation was listed as joiner. William, age 6, emigrated to the UK with his family 5 April 1921 on board the *Solstrief*.
2. **Edith Harriet WILKIE** born 7 June 1916 in Stanley. Her father's occupation was listed as carpenter. Edith, age 4, emigrated to the UK with her family 5 April 1921 on board the *Solstrief*.
3. **Neil WILKIE** born 1 September 1917 in Stanley. His father's occupation was listed as carpenter. Neil, age 3, emigrated to the UK with his family 5 April 1921 on board the *Solstrief*.
4. **Robert William WILKIE** born 24 October 1918 in Stanley. His father's occupation was listed as carpenter. Robert, age 2, emigrated to the UK with his family 5 April 1921 on board the *Solstrief*.



Rebecca and her four children in 1921