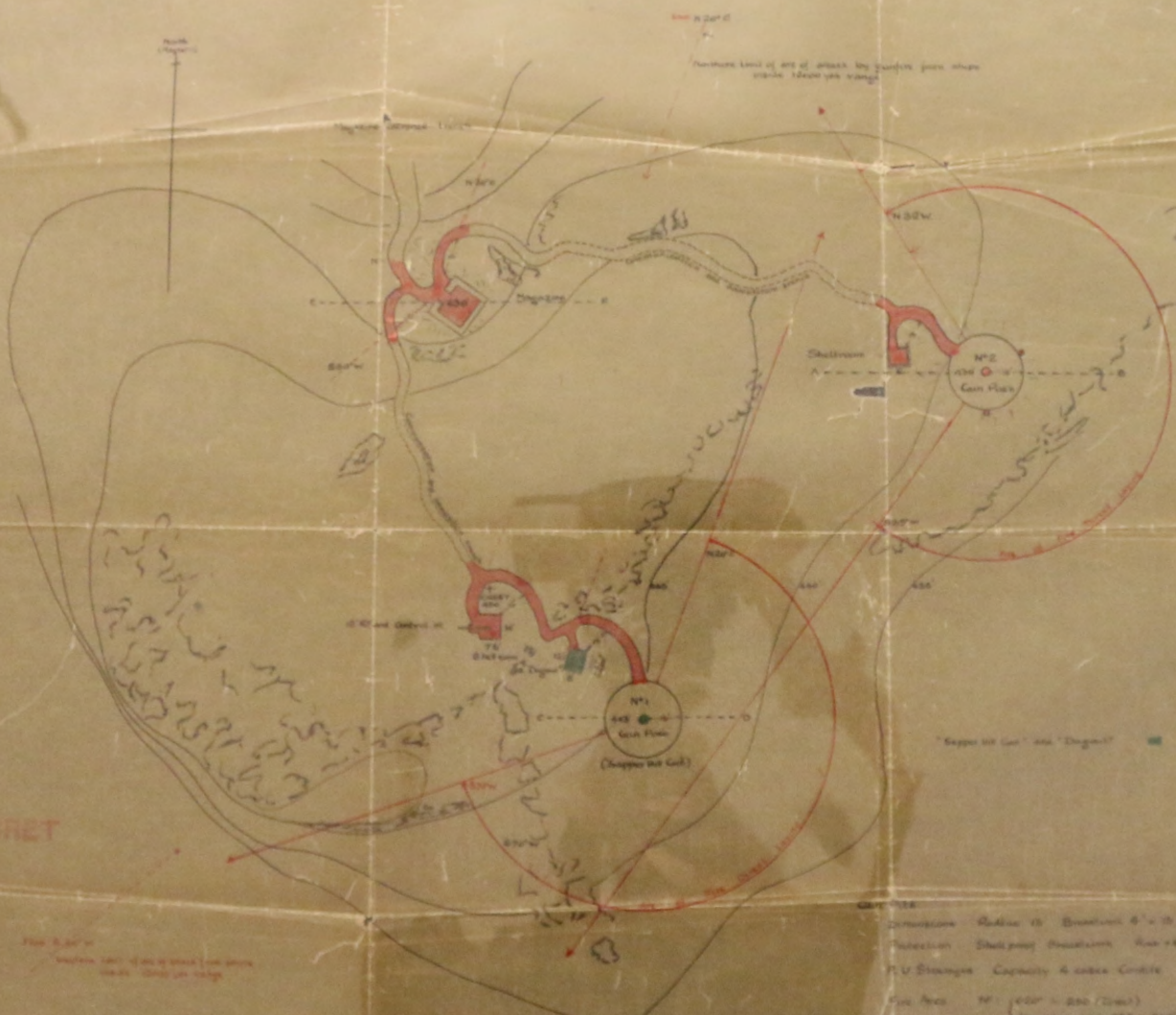


SECRET

PROPOSED DEFENCES SAPPER HILL FALKLAND ISLANDS

Appendix C

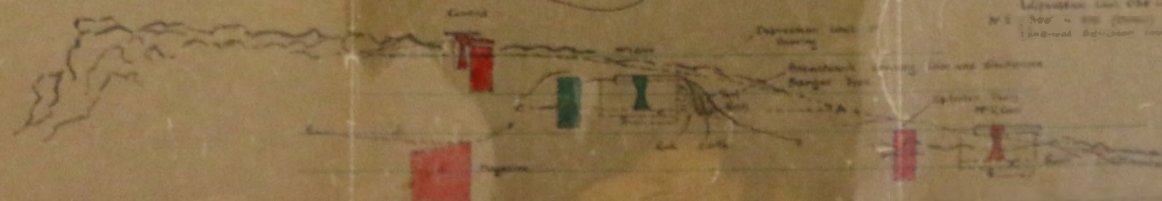
Map Scale 1/4" = 1 Mile  
Bearings Magnetic  
PLAN



SECRET

Scale 1/4" = 1 Mile  
Magnetic Bearings  
PLAN

Construction Radius 100 Yards 4" x 2" x 20"  
 Protection Shallowing Position Run 400 Yards  
 P.V. Storage Capacity 4 cubic Yards  
 Gun Plot N1 (400' - 200' (2000'))  
 Gun Plot N2 (300' - 200' (2000'))  
 Gun Plot N3 (300' - 200' (2000'))  
 (General Section Map 1000' - 2000')



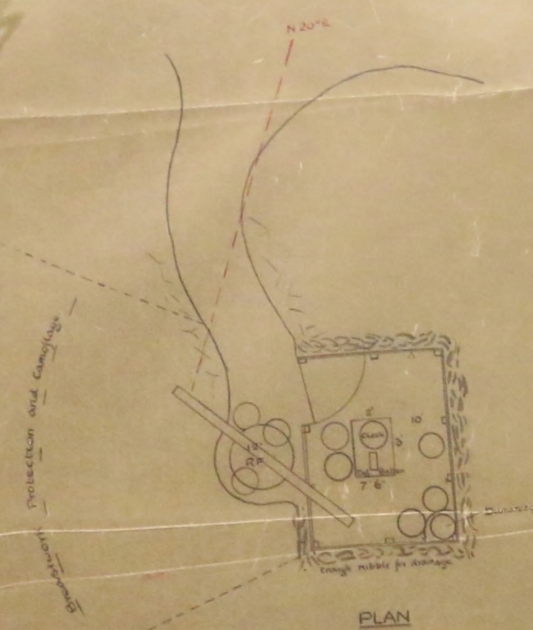
Map Scale 1/4" = 1 Mile  
Magnetic Bearings  
PLAN



PROPOSED CONTROL POSITION  
NO. 2 SHELL ROOM

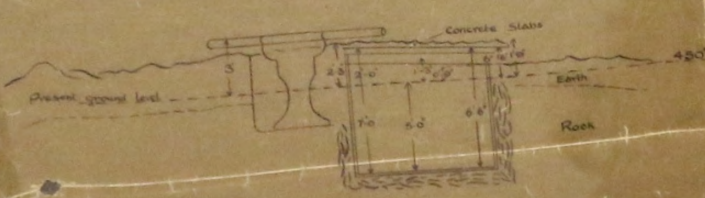
Appendix 'D'

SECRET



PLAN

12 R.F. and Control Hut (Scale 1/4")



ELEVATION

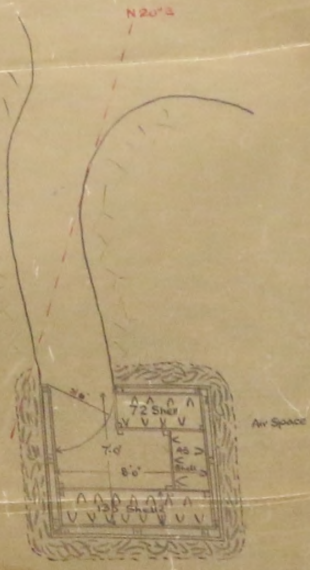
CONTROL POSITION

Protection Top Concrete Slab 3'-4"  
Sides and Front Rock 15" Min.  
Back & R.F. Breastwork

Observation 6" Aperture Mean 12' above ground level  
R.F. Height 8' above ground level  
Area R.F. 0° - 360°  
Hut 0° - 360°

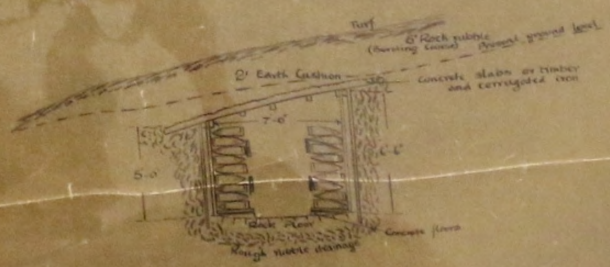
Dimensions 10' - 7'-6" x 6'-0" - 7'-0" (interior)

Concealment Max 18" above crest mesh, but  
surrounding rock points make  
camouflage easy and effective.

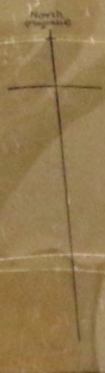


PLAN

No. 2 Gun Shellroom (6' x 1')



SIDE ELEVATION





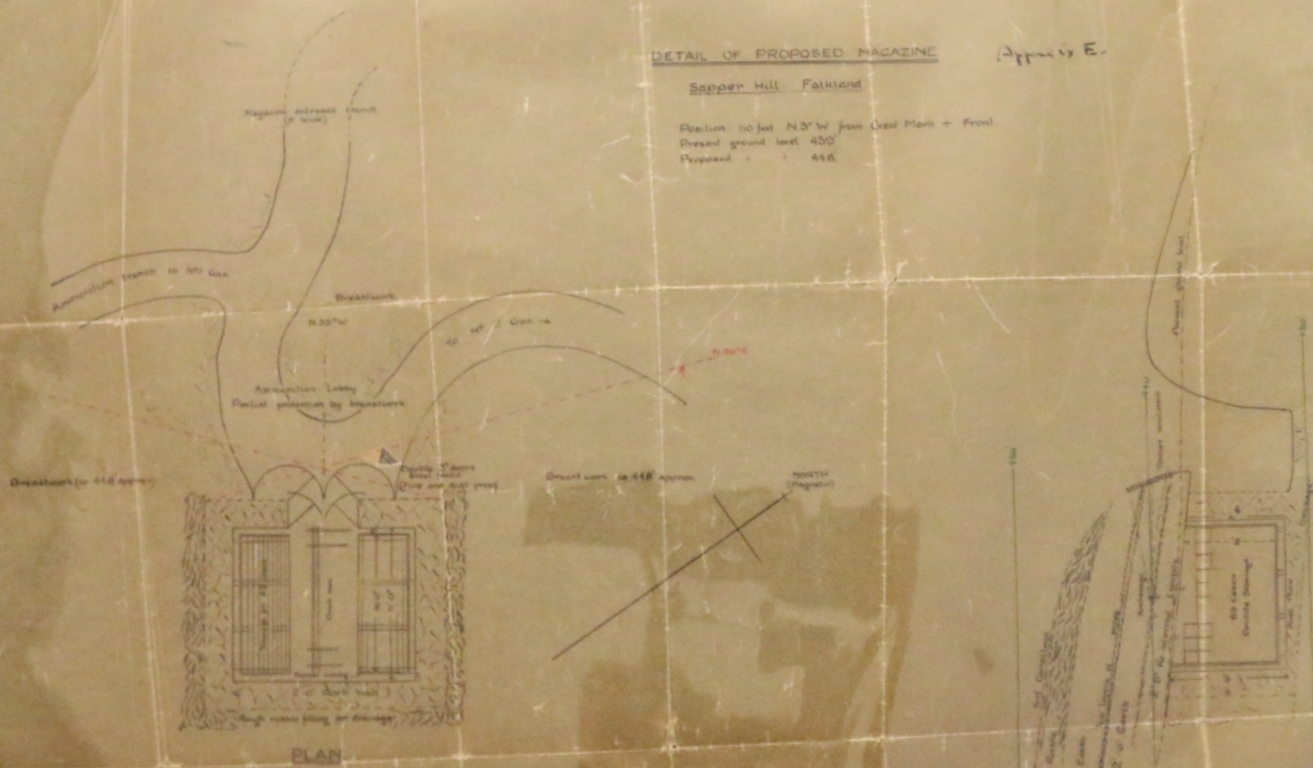
SECRET

DETAIL OF PROPOSED MAGAZINE

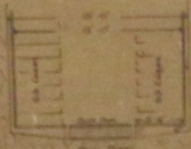
Appendix E.

Sapper Hill, Falkland

Position 110 feet N<sup>5</sup>W from Oxid Mark + Front.  
 Present ground level 450'  
 Proposed " " " 446'



PLAN



ELEVATION

- DIMENSIONS** Corridor (slab) 10' - 3/4" x 6' (ground)  
 Inner walls 11' x 15' x 7.6' (ground)
- CAPACITY** 126 Cases & Corridors in Two Stays of 63.
- CONSTRUCTION** Timber Floor  
 2" of Rock wall  
 Rough Rubble Concrete  
 2" of Concrete (reinforced) Raft  
 Corrugated Roofing Above concrete
- FINISHES** Tin Sheet Metal South Facing 2" Charcoal Tarred & Earth Covered  
 2" Impact concrete  
 Walls 100' x 2' 10" Thick and Breakdown  
 Windows - Brick Facing
- LIGHTING** None Required unless shell and splinter proof covering placed over Approach Lorry.

SECRET