

CAPE PEMBROKE LIGHTHOUSE

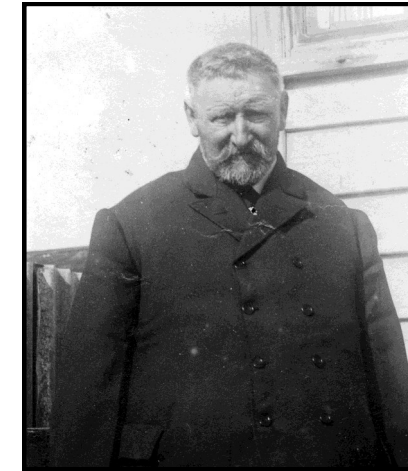
PRINCIPAL LIGHTHOUSE KEEPERS

William Timothy CREED
Principal Lighthouse Keeper
July 1855 to 1865
Married to Catherine O'BRIEN.

William David BENNEY
Principal Lighthouse Keeper
01 July 1865 to 1871
Born: 1836 in Landrake.
Married to Anne.

George William BROWN
Principal Lighthouse Keeper
01 March 1871 to 1877
Born: 1844 in Ireland.
Married to Margaret ROGERS.

George K BROOM(E)
Principal Lighthouse Keeper
10 August 1877 to March 1902
Born: 1843 in Cardiff.
Married to Elizabeth Jane
BUTCHER in Orford, Suffolk in
1865.



John K PEARCE
Principal Lighthouse
Keeper
22 March 1902 to 1926
Born: 19 Sep 1865 Tres-
co Is, Scilly Islands. Mar-
ried to Isabella GREY



Arthur William SULLY
Principal Lighthouse Keeper
1926 to 1937
(*assistant lighthouse keeper*
1910-1926)
Born: 21 Dec 1877 St Brides,
Newport.
Married to Gwladys Harding
WHITSON



William John LEWIS
Principal Lighthouse Keeper
15 May 1937 to
29 March 1946
Born: 27 Sep 1900 Neyland,
South Wales.
Married to Mary BARRETT

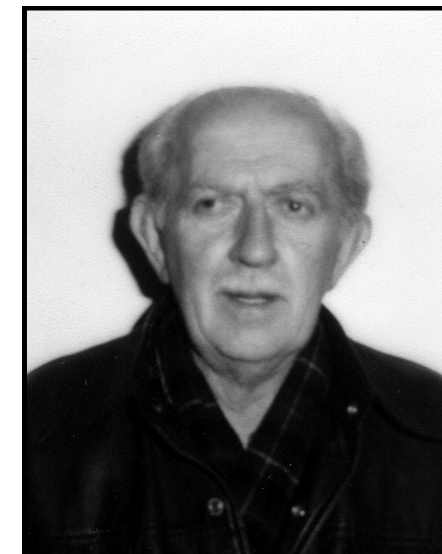


William Ernest "Buzz" SPENCER
Principal Lighthouse Keeper
29 March 1946 to
31 October 1955
(*assistant lighthouse keeper*
1929-1946)
Born: 26 Mar 1907 in Stanley.
Married to Elizabeth Agnes
GOSS in FI 26 Apr 1930.
Died 24 Nov 1981 in Stanley.
Buried in Grave R1970

Frederick George BERNTSEN, BEM
Principal Lighthouse Keeper
01 November 1955 to
09 January 1966
(*assistant lighthouse keeper*
1931-1955)
Born: 1 Sep 1906 in Stanley.
Married to Flora BRAXTON in
FI 25 Jun 1930.
Died 9 Jan 1966 at Cape
Pembroke.
Buried in Grave T2043.



George Walter "Geordie" LYSE
Principal Lighthouse Keeper
1966 to 04 August 1979
(*assistant lighthouse keeper*
1956-1966)
Born: 13 Mar 1919 in Stanley.
Died: 10 Feb 2004 in Santiago.



Basil William BIGGS
Principal Lighthouse Keeper
1979 to April 1982
(*assistant lighthouse keeper*
1966-1979)
Born 31 Mar 1918 at First &
Last Hotel, Ross Rod East,
Stanley.
Married to Betty Josephine
ROWLANDS in FI
4 Sep 1947.
Died 8 May 1987.
Buried in Grave R3075.

The Cape Pembroke Lighthouse was first lit in 1855 and was manned almost continuously until put out of service by the 1982 Invasion

Photographs 5, 6, 10 & 11 © Jane Cameron National Archives, Stanley, Falkland Islands. Photographs 7 & 8 © B Pring, Stanley, Falkland Islands