

Broadcast p 242 - 244 incl.

P. 4 full cost per 2  
4. Inc. i cost of labor  
• due to 20% cost base

Charming but quite irrelevant and  
photographs do cost such a lot of money  
to reproduce.

There are 180 of them - some are  
pointless others incapable of reproduction  
of C3 C5 C10 - one might just as well  
take a photograph of the ocean



B.1. X

Dottrel Nesting on ploughed ground at Canache. Photographed November, 1941.

(236)



B.2. X

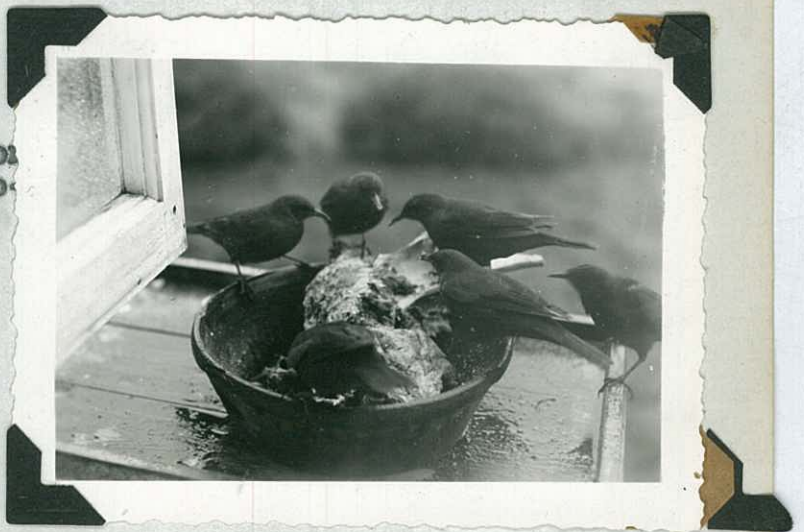
Dottrel nesting on ploughed ground at Canache. Photographed November, 1941.

(236)



B.3. X

Tussac birds feeding on mutton bone, Carcass Island. Photographed March, 1941. (240)



B.4. X

Tussac birds and native thrush (lightbill) feeding on mutton bone, Carcass Island. Photographed March, 1941. (230)





B.5. X

Logger Duck nesting  
at Canache. Photo-  
graphed November, 1941.

(237)



B.6. X

Logger Duck nesting  
at Canache. Photo-  
graphed November, 1941.

(235)



B.7. X

Logger Duck nesting  
at Canache. Photo-  
graphed, November, 1941

(239)





Not

X

BK.1.

Assistance given by an experienced bee keeper in the Royal Engineers. Hand (left). Photographed Jan. 43.



BK.2.

Examining a frame of one of the hives. Left to right, Hand and J.G.Gibbs. Photographed January 1943.



X

BK.3.

Opening up the fourth hive (behind the corrugated iron). Photographed January, 1943.



X

BK.4.

Opening up the fourth hive (behind the corrugated iron). Photographed January, 1943.



BK.5.

Hand examining frame on first hive. Photographed January, 1943.

X





254  
247

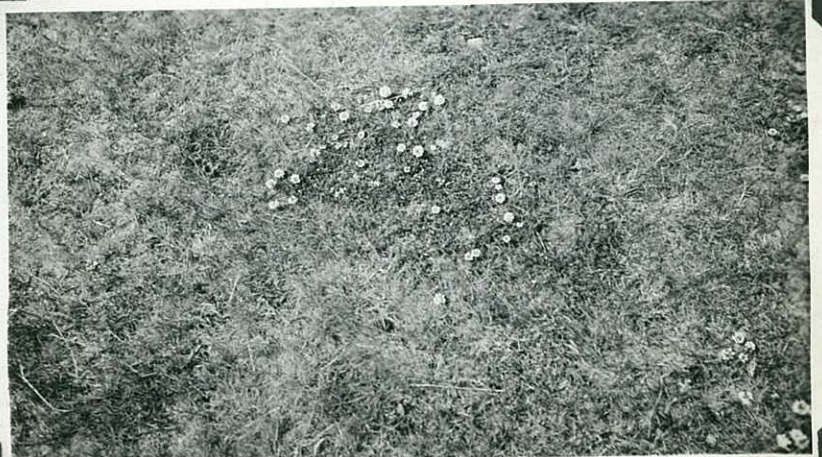
C.1. X

Introduction of clover to native white grass camp, shewing strip of lime and clover seed lying on native vegetation. Photographed (254)



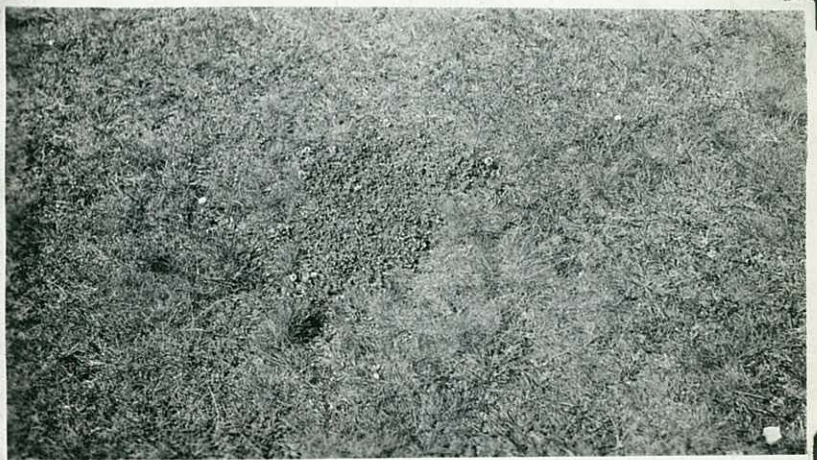
C.2.

Clover establishment on Agrostis pasture from sowing 2-lbs. white clover seed per acre. 3½ years previously without fertilizer. Photographed February, 1945. (259)



C.3. X

Clover establishment on Agrostis pasture from sowing 2-lbs. white clover seed 3½ years previously, without fertilizer. Photographed February, 1945. (261)



C.4. X

Clover establishment general view of Agrostis pasture, hillside Government House Paddocks, shewing clover establishment after sowing 2-lbs. inoculated seed per acre without fertilizer in the spring of 1941. (260)



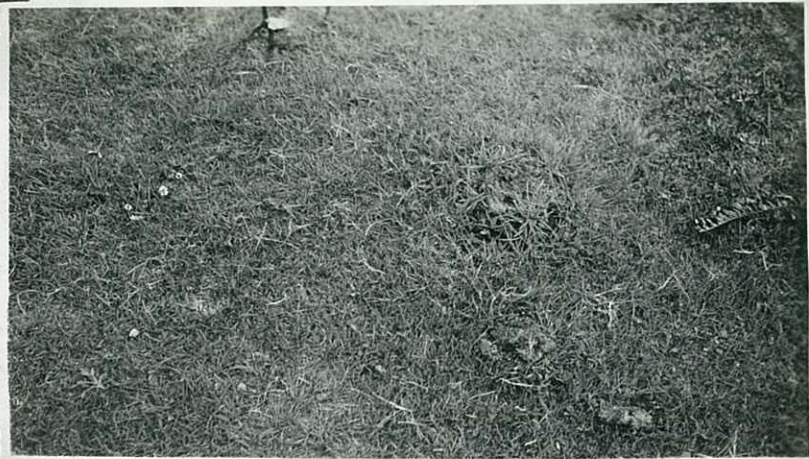


X

C.5.

Clover establishment resulting from seed present in hay and spread in the manure by cattle on unfertilized *Agrostis* pasture. Photographed February, 1945.

(268)



C.6.

Clover establishment resulting from seed present in hay and spread in the manure by cattle on unfertilized *Agrostis* pasture. Photographed February 1945.

(267)



C.7. X

Clover establishment resulting from seed present in hay and spread in the manure by cattle on unfertilized *Agrostis* pasture. Note grass tending to smother pig-vine on left foreground. Photographed February 1945.

(263)



C.8.

Clover and pasture establishment, result of sowing (mixture B) on light sandy peat at Old Wireless Station paddock, December, 1944. Photographed February 1945.

(132)





C.9.

Clover and pasture establishment, result of sowing (mixture B) on light sandy peat at Old Wireless Station Paddock, Dec. 1941. Photographed February, 1944. (131)



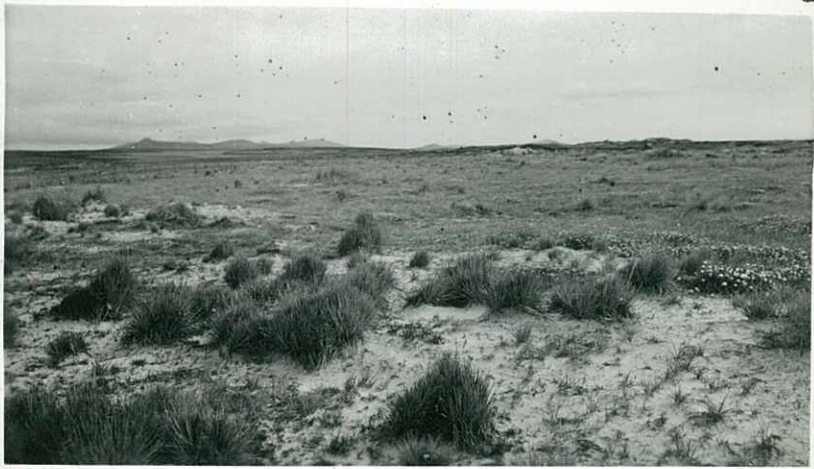
C.10.

Same pasture as C.9. after excessively severe grazing which destroyed much of the cocksfoot. Photographed April 1942. (153)



C.11.

Clover establishment on sand at Rookery Bay, sown January 1942, foreground natural condition neither clover or grass is sown. Photographed Feb. 1944. (129)



C.12.

Clover establishment on sand, showing uneven strike of grass and at Rookery Bay due to lack of experience by broadcasters and uneven distribution of seed sown January 1943. Photographed Feb. 1945. (116)





C.13.

Clover establishment Rookery Bay, Photographed February, 1945.

(167)

(4115)



C.14.

Mowing clover on same area, Rookery Bay. Photographed February, 1945. (175)



G. STEWART

C.15. X

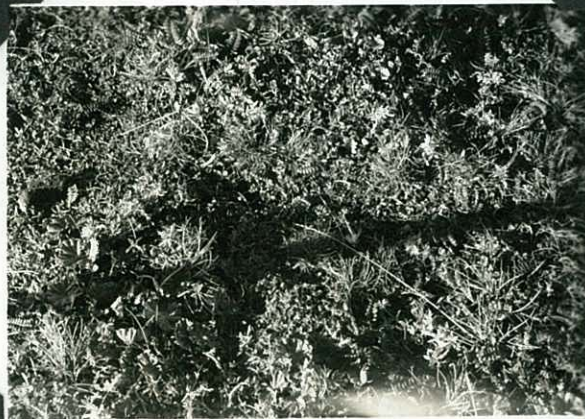
Clover establishment with the aid of lime (Latin square experiment, Pebble Island). Clover and lime sown February, 1941. General view of Experimental area. Photographed July, 1945. (74)



C.16. X

Clover plant establishment on plot dressed with 1 ton lime per acre, Pebble Island Experiment, photographed July, 1945.

(97)







X  
C.17.

Clover plant establishment on plot dressed with 1 ton lime per acre, Pebble Island Experiment. Photographed July, 1945. (96)



(1 m...)

X  
C.18.

Clover establishment with the aid of lime on short fern camp, Pebble Island showing natural spread of clover through short fern. Photographed July, 1945. (77)



X  
C.19.

Clover establishment on strip of lime to East of Bliza Cove Road, sowing made February, 1945. Note clover plants at the base of the white grass bog upper right hand quarter of the photograph. Photographed May, 1945. (96)



X  
C.20.

Clover establishment on strip of lime to East of Bliza Cove Road, sowing made February, 1945. Less detail visible Photographed May, 1945. (95)





C.21.

Establishment of clover on lime spilt at end of Traverse on experiment to East of Eliza Cove Road. Scale at base in inches and centimeters. Photographed May, 1945.  
Sown February, 1945 (82)



X

C.22.

Establishment of clover on lime spilt at end of Traverse on experiment to East of Eliza Cove Road. Scale at base in inches and centimeters. Photographed May, 1945. (56)



X

C.23.

Clover establishment on strip of lime to East of Eliza Cove Road, three months after surface sowing. Photographed May, 1945. (62)



X

C.24.

Clover establishment on strip of lime to East of Eliza Cove Road, three months after surface sowing. Photographed May, 1945.





D.1.

Main drain on West  
section of Common  
cut by hand in  
Weir's time. Photo-  
graphed February,  
1945.

(212)

X



D.2.

Lateral drain made  
with Killefer ditcher  
and tractor, along  
South slopes, "60  
acre". Spring 1943.  
Photographed February  
1944.

(271)

X



D.3.

Ditch made with  
Killefer ditching  
attachment in  
tractor to collect  
seepage from Spring  
in South East corner  
of "60 acre". Photo  
January, 1945.

(201)





D.4.

Close up of  
D.3. Ditch  
from 18 to 20 inches  
deep. Photographed  
January, 1945. (247)

X



X

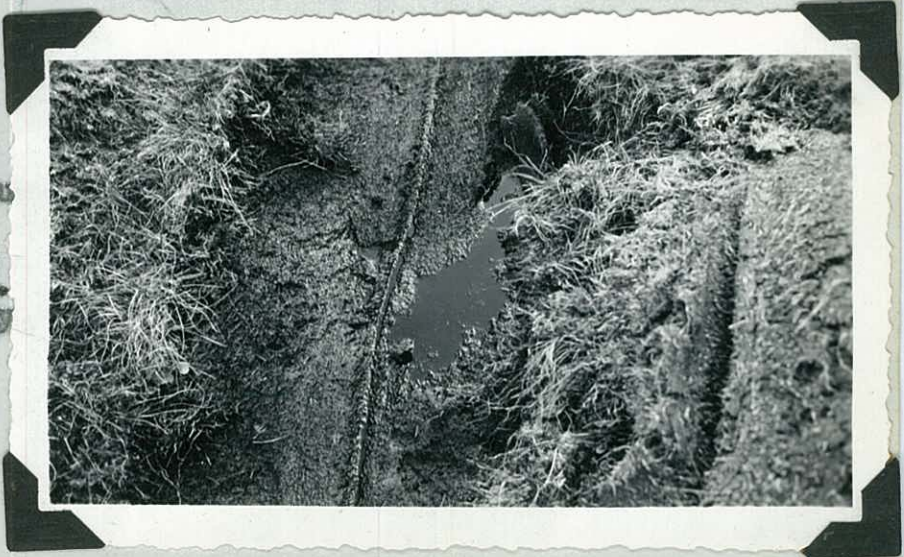
D.5.

Junction of two drains  
made with ditcher on  
"60 acre" trimmed and  
joined by hand (Note  
continuation of left  
hand drain in the be-  
ground across the  
slope). Photographed  
January, 1945. (206)



D.6.

Showing seepage of su-  
face moisture into  
newly made ditch on  
West section Common.  
Photographed January  
1945. (211)





X

D.7.

West of  
Common and Mount  
William showing  
cattle and drains  
Photographed  
January, 1945.

(203)





DS.1.

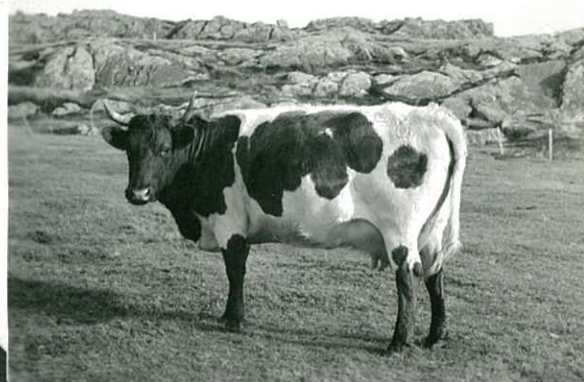
General view  
Dairy Herd.  
Photographed January,  
1945. (269)



DS.2.

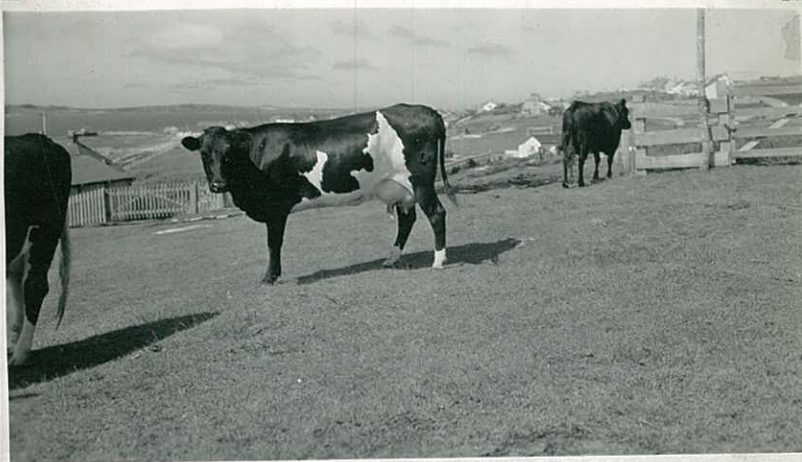
One of the foundation cows  
Daffodil. Photo-  
graphed January, 1945,

*Jackson* (92)



X  
DS.3.

Two cows of our own  
breeding, *Stucky*  
and *Ellen*. Photo-  
graphed January,  
1945. (258)



X  
DS.4.

Fanny. Photo-  
graphed January, 1945.

(68)





DS.5.

General view of calves  
Government House  
Paddocks. Photo-  
graphed January, 1945.

- 219 Daisy
- 220 Gypsy
- 221 Beauty
- 222 Friday
- 223 Fairy
- 225 Zeana.



220	219	222	221
223			225

DS.6. X

Branding calves, Stanley  
Common. Photo-  
graphed January, 1945.

(202)



DS.7. X

Calf at Waghorn's Dairy,  
three days after commencing  
treatment for Rickets.  
Photographed September,  
1942. (152)





DS.8.

Imported  
Bull, Trojan  
King Wayne. Photo-  
graphed Winter, 1942.

(146)



DS.9.

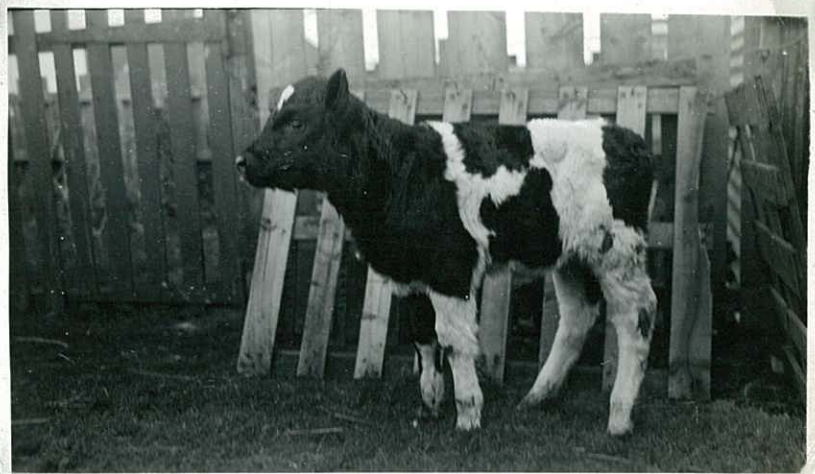
Feeding turnips to cattl  
Photographed winter,  
1942. (209)



X

DS.10.

Animal husbandry,  
Calf recently cured  
of rickets. Photo-  
graphed September  
1942. (155)



X

DS.11.

Common Round up, calf  
branding. Photo-  
graphed January, 1945.

(256)







G.1.

A Peat bank with sods laid out for drying. Photographed December, 1944. (257)



G.2.

Carting home the peat. Photographs February, 1945.

(139)



G.3.

Intensive Poultry House, Department of Agriculture. Photographed May, 1941.

(141)



G.4.

Intensive Poultry House, Department of Agriculture, and first hay stack. Note the road before the advent of the Imperial Forces. Photographed May, 1941.

148





M.1. X

Corner of garden at Bonners, San Carlos (shelter provided by Gorse hedge). Photographed February, 1941.

(145)



M.2. X

First view of West Falklands from San Carlos. Photographed February, 1941.

(176)



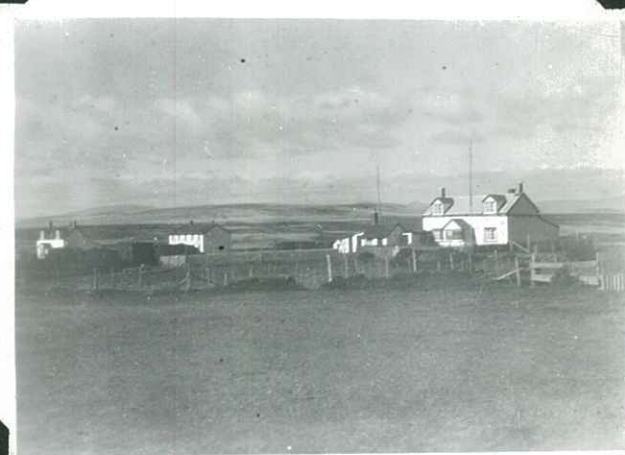
M.3. X

Manager's House at Douglas. Cookhouse mid left background. Photo Feb 1941.

(144)

M.3.

Wireless Station Fox Bay East, showing left to right, Medical Officers Quarters, Cookhouse and Wireless Operators Quarters. Photographed April, 1941.



M.4. X

H.M.S. William Scoresby acting as inspection ship. Photographed December, 1941.





X

M.5.

Swell breaking on reef at Fox Bay. Photographed April, 1941.

(230)



X

M.6.

Swell breaking on reef at Fox Bay. Photographed April, 1941.

(241)



X

M.7.

Office Staff, Department of Agriculture. Photographed July, 1944.

(90)



E. ENESTROM  
T BEATY GIBBS.



M.8.

Office Staff  
Department of  
Agriculture. Photo-  
graphed July, 1944.

(99)



MISS  
CARTER. E. ENESTROM  
D'GIBBS. T. BEATY

262

M.9.

General view of Golf  
Links (which were  
used for grazing  
herd for milk pro-  
duction). Photo-  
graphed summer, 1943.

(140)



M.12.

Departmental Ford,  
Model A. 1929. Photo-  
graphed February,  
1944. 142



M.13.

Improvement Govern-  
ment House grounds.  
Stanley. Photo-  
graphed January,  
1945. 171





M.14.

West Sports Meeting, Roy Cove. Robertson, Still and Mrs. Harding. Lunch in tent. Photographed

X



M.15.

Local transport between mainland and Carcass Island. Golden Fleece leaving Dunbar. Photographed March, 1941.

(222)



263

M.16.

Golden Fleece leaving Dunbar for Carcass Island. Photographed March, 1941.

(229)

X



M.17.

On board Golden Fleece. Photographed March, 1941.

(226)

X





N. 18.

X

On board the Golden  
Fleece. Photographed  
March, 1941. 224.



In Original on p 263



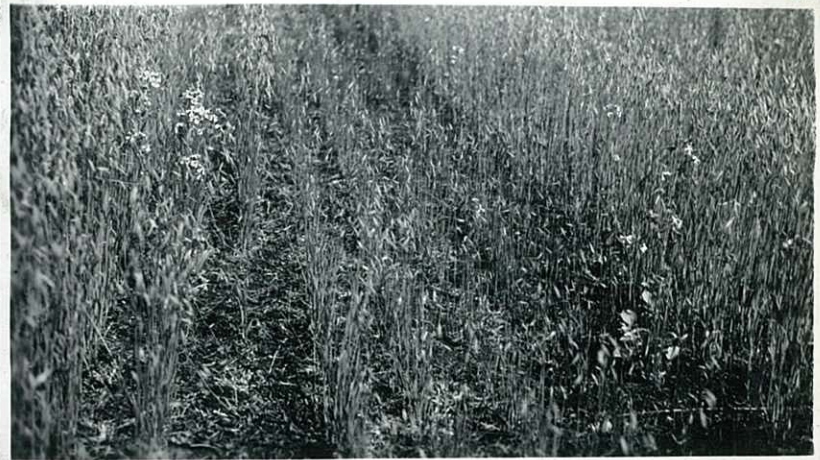
0.1.

First oat crop Algerian type, ex Monte Video showing lack of growth in absence of phosphatic manuring, "60 acre". Photographed January, 1945



0.2.

Oat crop Algerian type ex Monte Video showing lack of growth due to absence of phosphatic fertilizer as box emptied, "60 acre". Photographed January, 1945. (205)



0.3.

First crop of oats, Short's paddock, Storm King variety. Photographed February 1944. (181)



BEN WATSON

good draft horses.

X

0.4.

First crop of oats, Short's paddock, Storm King variety, Photographed February, 1944. (178)





0.5.

Oat crop on "60 acre" to East of Felton Stream. Shewing one of the main drains. Photographed January, 1945. (247)



X

0.6.

Stacks of eaten hay in Old Wireless paddock, Canache. Photographed June, 1944.

(63)



X

0.7.

View of first oat crop, "60 acre". Winter oats to left. Spring sown oats to right. Strips of bare ground due to lack of fertilizer, are visible in winter oats. Photographed January, 1945.

(60)







0.8.

First crop of  
oats on "60 acres",  
Short's paddock,  
Beaty and Watson.  
Cut February, 1944.

(179)



0.9.

Oat crop, Storm King  
on Old Wireless  
Station paddock -  
4 acres - coked.  
Photographed Februar  
1944.

(136)

X



0.10.

Oat crop Old Wireless  
Station paddock,  
coked. Foreground  
seeding fog sown on  
boarded furrows with  
10 cwt. lime, Decemb  
1941. Photographs  
February, 1944.

(134)

X





P.1.

General view first potato crop, Eliza Cove.  
Photographed February, 1944.

(218)



P.2.

General view first potato crop  
Eliza Cove, looking North.  
Photographed February, 1944.

(217)



P.3.

General view of first potato crop,  
Eliza Cove, looking  
North West. Photographed  
February, 1944.

(215)



P.4.

General view first potato crop  
Eliza Cove, looking West.  
Photographed February, 1944.

(223)



61-3267



P.5.

First crop potatoes, Eliza Cove. Yield of individual plants, Arran Banner. Photographed February, 1944.

(216)



P.6.

First crop potatoes, Eliza Cove. Yield of individual plants. Arran Banner. Photographed February, 1944. (214)

X





P.10.

Second potato crop, Eliza Cove. Arran Banner variety. Photographed January, 1945. (210)



X

P.11.

Second potato crop, Eliza Cove, Moulding up. Photographed February, 1945. (262)



P.12.

Close up of second potato crop, Eliza Cove. Photographed February, 1945. (274)



P.13. X

Close up of second potato crop, Eliza Cove. Photographed January, 1945. (273)





## PM.5.

Close up of native pasture outside "60 acre" paddock fence chiefly, juncus, pig-vine and white grass. Photographed April, 1945.

(72.)



## PM.6.

Close up of heavily grazed portion within the fence showing some closely grazed juncus, and white grass, with uprooted portions of oreob. Photographed April, 1945.

(67)



## PM.7.

"60 acre" pasture after heavy stocking with sheep. Photographed 10 yards from boundary fence, see PM.4. and PM.5. Photographed April, 1945.

(78)



## PM.8.

Sweet native pasture well grazed by cattle on banks of drain - D.1. Photographed April, 1945.

(64)





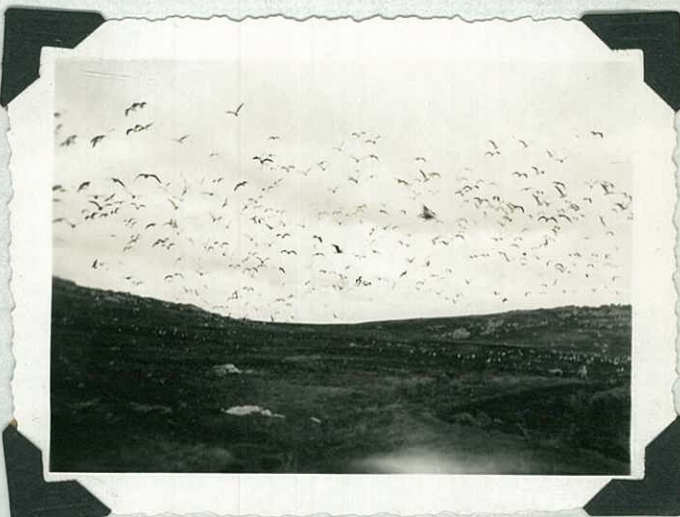
PM.9. X

Showing effect of electric fence boundary, "3 acre" *live plantation* enclosed on Common behind Government House. Photographed April, 1945. (65)



PM.10. X

Gulls scavenging on the carcasses of culls, "60 acre" West of Felton Stream. Photographed April, 1945. (61)



PM.11. X

Gulls scavenging on the carcasses of culls. "60 acre". West of Felton Stream. Photographed April, 1945.

(75)



PM.12. X

Gulls after scavenging on the carcasses of culls, "60 acre" returning to the sea. Photographed from Felton Stream Bridge. April, 1945. (66)





PM.13.

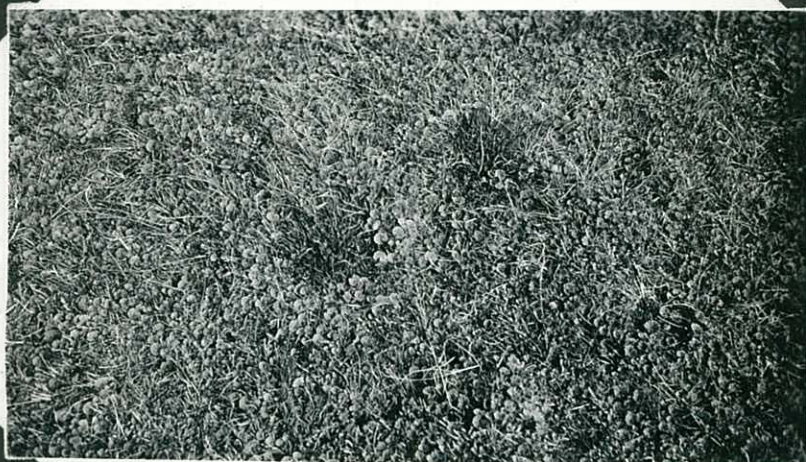
Natural  
pasture on heavily  
grazed sandy soil,  
Old Wireless  
Station Paddock.  
Photographed  
February, 1945.

(272)



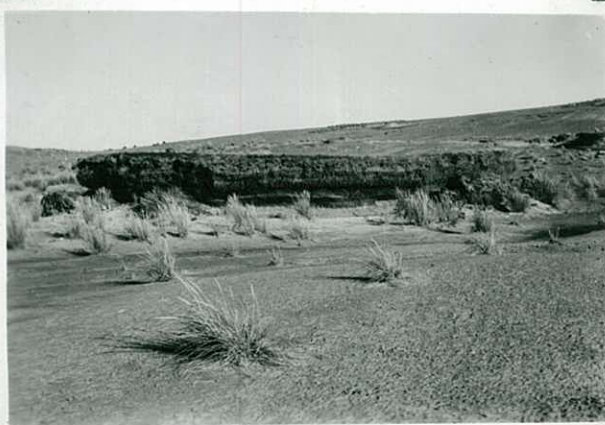
PM.14. ~~X~~

Sweet native pasture  
on banks of main  
drain, West section  
of Common. See  
D.1. Photographed  
1945. (213)



PM.15.

Soil erosion following  
over grazing or un-  
wise burning, fore-  
ground planted with  
sandgrass, original  
level of soil on top  
of peat bank, North  
Harbour, Roy Cove  
Photographed April,  
1941. (220)



PM.16. ~~X~~

Top dressing pastures  
with lime. (Ben  
Watson and Durbin).  
Photographed Septem-  
ber 1942. Paddock be-  
tween Bungalows and  
Sullivan House.

(207)





PM.17.

Top dressing pasture with lime (Ben Watson and Durbin) Photographed paddock between Bungalows and Sullivan House September, 1942.

(208)



PM.18.

North Harbour, Roy Cove, sand drift planted to sand grass, Diddle Dee camp in foreground. Photographed March, 1941.

(219)



PM.19.

Clover establishment on Agrostis pasture from sowings of 2-lbs. white clover seed per acre 2½ years previously, with super lime at 4 cwt. p.a. followed 12 months later by 20 cwt. carbonate lime pa. No fertilizer or seed to right of Camera Case. Photographed February, 1944.



Original PM 9 on P 279





PM. 20.

His Excellency the Governor in Red Clover, Old Wireless Station Paddock. Photographed February, 1945.

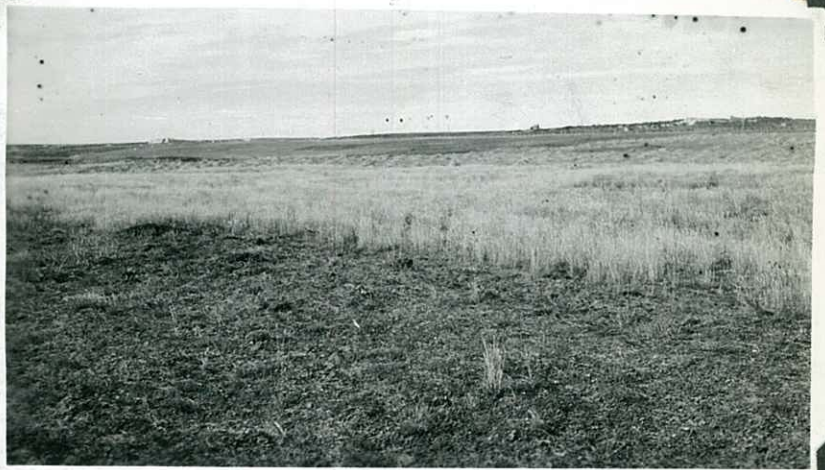
*Corbinolo*



*Standing in Clover*

PM. 21.

Pasture establishment A Foreground native coastal pasture distance seeding of 19-lbs per acre on boarded furrows, sown December 1941 on diddle dee ground. Allowed to seed naturally. Photographed February, 1944. 135



PM. 22.

Pasture establishment same sowing as PM. 21. Photographed February, 1945. 130



*Original photo to PM 19-21*



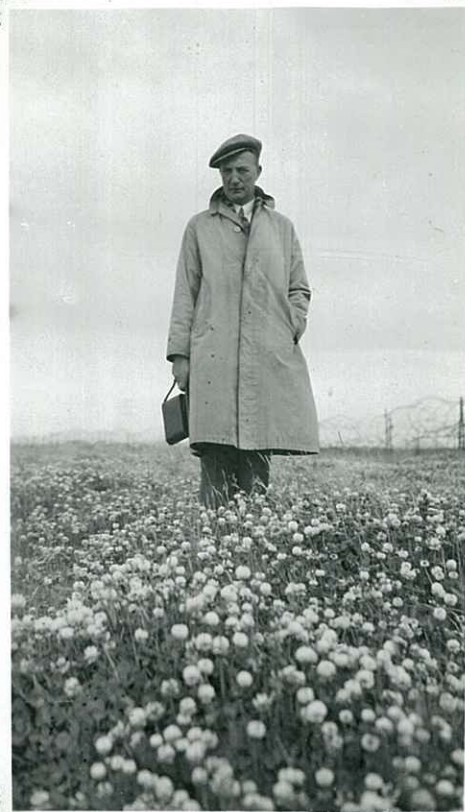
PM. 23.

Pasture establishment seeding of fog to fill up gaps in pasturage. Photographed February, 1944. Same area as PM. 21. (133)



PM. 24.

Clover establishment on sand. Enestrom at Rookery Bay. Photographed February 1944. (114)



Pm. 25.

Grass establishment on sand. Sown January 1942. Photographed February 1944. Foreground not sown. (174)





PH. 26.

Pasture establishment on sand. Clover at Rookery Bay. Two years after sowing. Photographed February, 1945.

(270)



PH. 27.

Clover establishment on sand, Rookery Bay. First sowing, Feb. 1942. Foreground sown Feb. 1943. Photographed Feb. 1945.

(172)



PH. 28.

Pasture establishment on sand, sown January, 1943, showing uneven strips due to little experience of broadcasting. Photographed February, 1944.

118,



*Original includes PH. 25.*



PM. 29.

Sowing clover on Common. Photographed February 1945. (252)



SVD. ALDRIDGE T. BEATY. BAZIL REINE CLIFF JENNINGS.

X

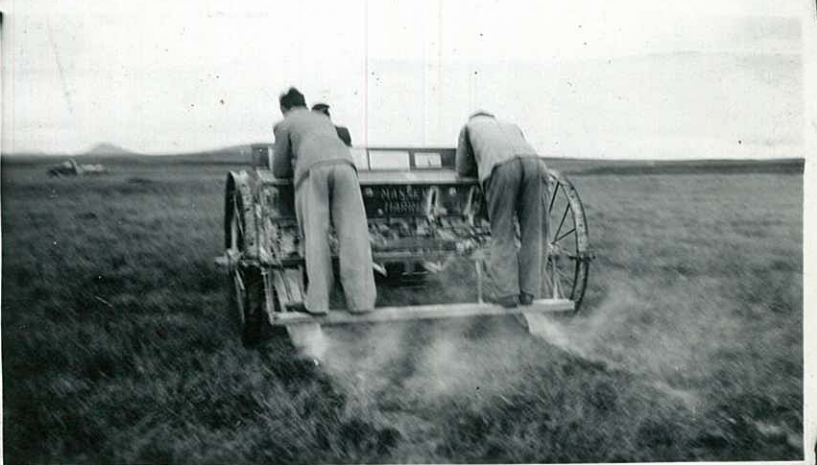
PM. 30.

Experimental sowing to establish clover in camp at reasonable costs. Photographed February, 1945. 255



PM. 31.

Sowings to establish clover at camp at reasonable costs. Photographed February, 1945. 253



PM. 32.

Drill modified for sowing strips of manure and clover seed. Photographed February, 1945. 250  
To East of Eliza Cove Road.





X

Qd. 1.

Huskies at  
Quarantine Station.  
Captain. Photo-  
graphed January, 1945

(49)



Qd. 2.

X

Huskies at Quarantine  
Station. Rover.  
Photographed January,  
1945.

(47)

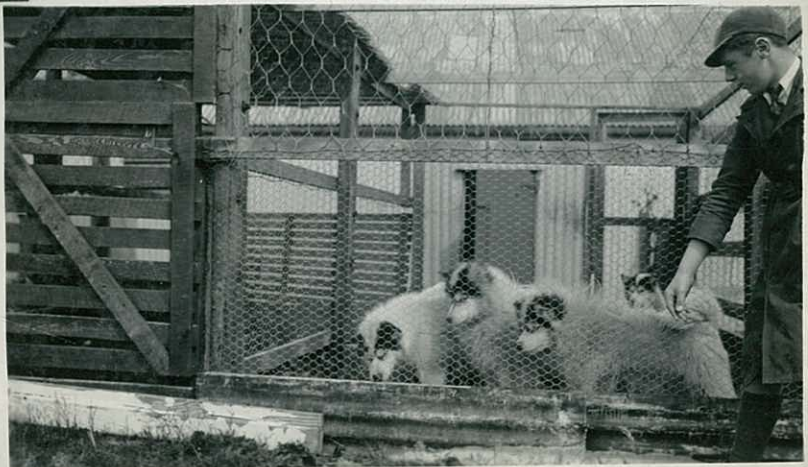


Qd. 3.

X

Huskies at Quarantine  
Station. Mother  
and Pups. Photo-  
graphed January, 1945.

50

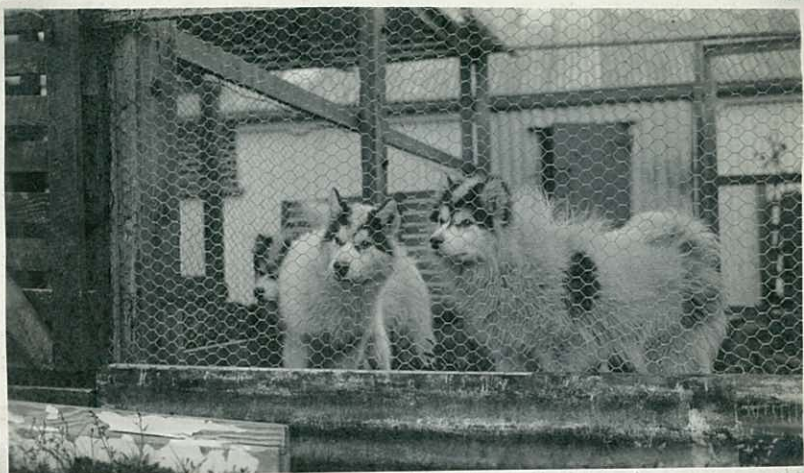




X  
Qd. 4.

Huskies at Quarantine  
Station. Pups.  
Photographed January,  
1945.

51.



X  
Qd. 5.

Huskies at Quarantine  
Station. Marshall  
with Pup. Photo-  
graphed January, 1945.



X  
Qd. 6.

Loading dogs into crates  
en route for bases.  
Photographed January,  
1945.

48.





Qd. 7. X

Loading dogs into crates on route for bases. Photographed January, 1945.

52



Qd. 8. X

Huskies en route for bases on arrival of Fitzroy. Photographed December, 1944. (76)



Qd. 9. X

Huskies en route for bases Photographed on arrival of Fitzroy, December, 1944. (69)





X Qd. 10.

Quarantine Station. B. Fleuret, and Marshall preparing dog food. Photographed January, 1945

55



X

Qd. 11.

Quarantine Station. Huskies about to leave for South. Captain on West. Gladys Atkins, James and Marshall. Photographed January, 1945.

54



X

Qd. 12.

Quarantine Station. Huskies leaving for South. Pups Photographed January, 1945







X

Qs.1.

Sheep imported from New Zealand (ex Photographed 1940).

(228)



2897

X

Qs.2.

Sheep imported from New Zealand (ex Photographed 1940).

(234)

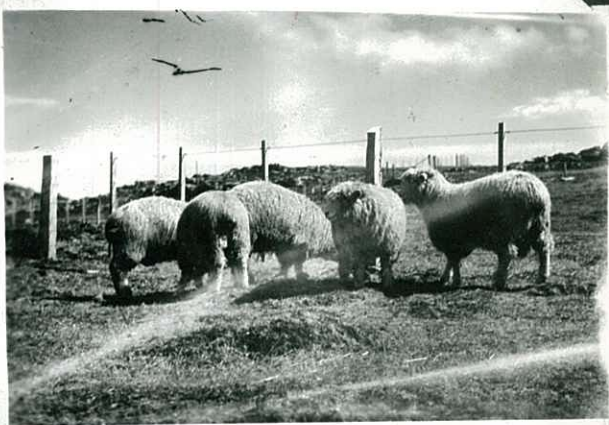


X

Qs.3.

Sheep imported from New Zealand (ex Photographed 1940).

(232)



Qs.4.

Sheep imported from New Zealand (ex Photographed 1940).

227



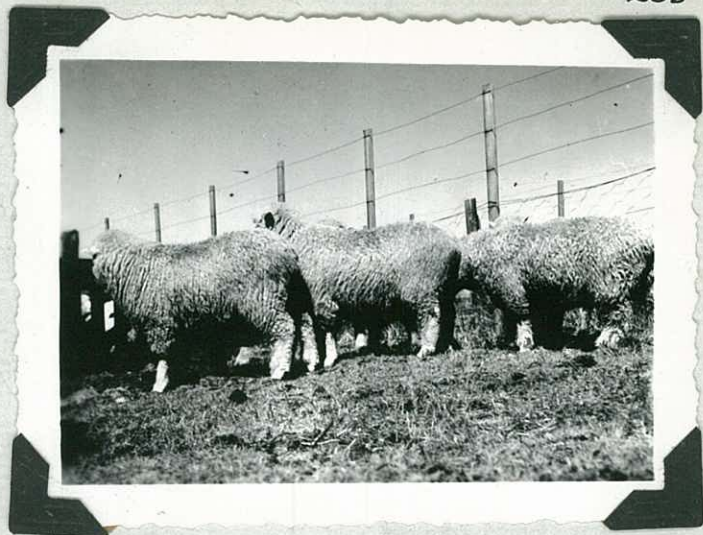


Qs. 5. X

Sheep imported from New Zealand (ex)

Photographed 1940.

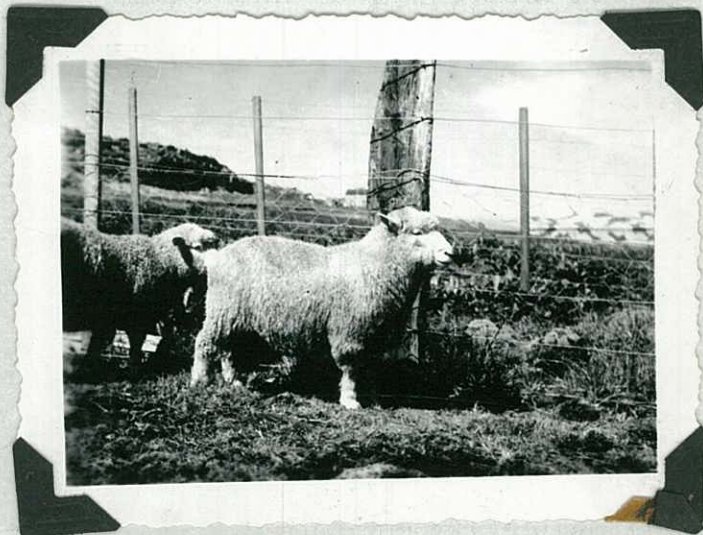
231



Qs. 6. X

Highest priced ram in the shipment from New Zealand. Photographed 1940.

233



Qs. 7. X

Sheep imported from Punta Arenas January, 1945 in quarantine station. Photographed end January, 1945.

137



Qs. 8.

Sheep imported from Punta Arenas, January, 1945 in quarantine station. (shorn sheep from St. Julian woolley sheep from ) Photographed end January, 1945.





Qs.9.

Shearing sheep Quarantine Station, January 1945.

X



E. HARVEY. B. FLEURET. J. BROWNING

Qs.10.

Browning shearing imported ram at Quarantine Station. Photographed January, 1945.

X

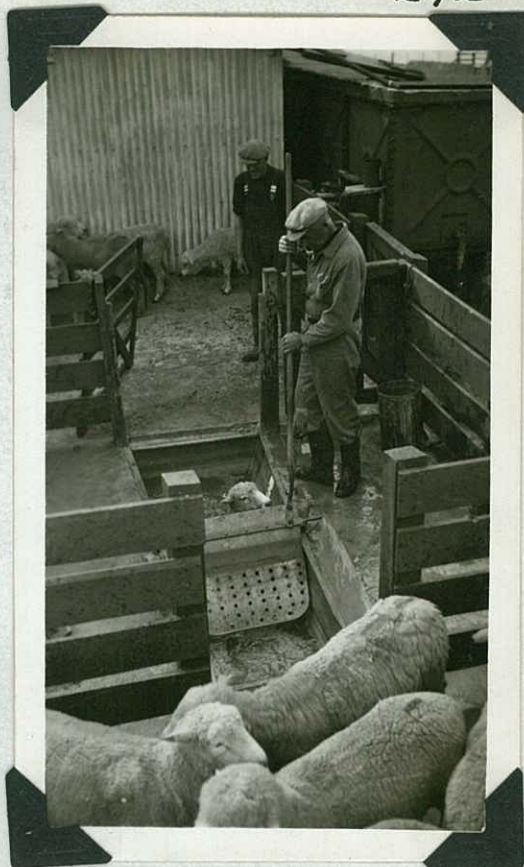




QS.11.

Dipping imported rams at  
Quarantine Station. Photographed  
January, 1945. (185)

*Plot*



E. HARVEY W. BURNS.

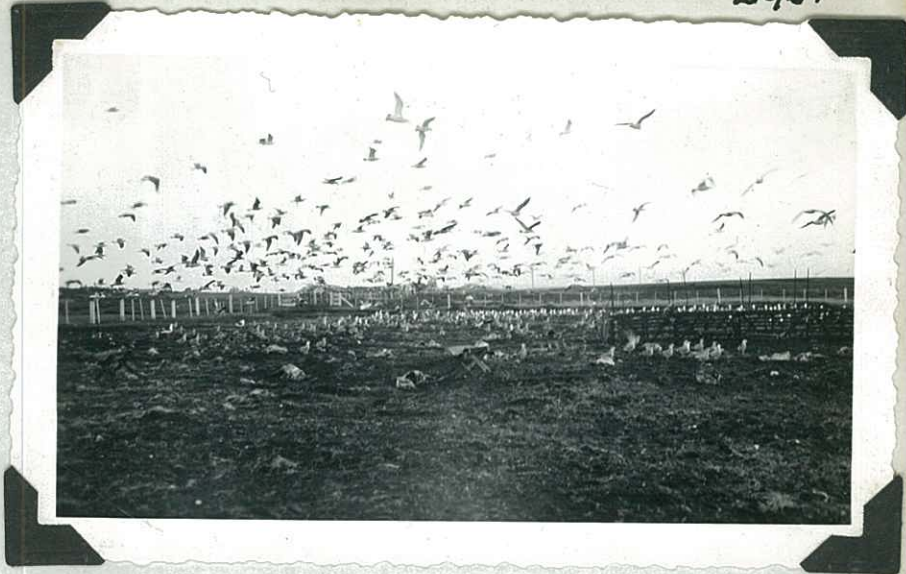
*not in original*



S.1.

Killing Cull sheep and spreading carcasses over the ploughed ground Old Wireless Station Paddock. Photographed April, 1942.

53.



S.2.

Showing killing bench in Gore ground Photographed April, 1942.

147



X

S.3.

Gulls hovering over carcasses of Cull sheep, killed on the top of Hookie's Point. Photographed April, 1942.

149.



S.4.



T.1.

C. macrocarpa planted on Government House drive, 1941. Photographed November 1944. 248.



T.2. X

C. macrocarpa planted on Government House drive. 1941. Photographed November 1944. 170



H. EVANS.

T.3. X

Corner of first shelter belt planting showing C. macrocarpa and Pinus Radiata, native Koromiko in background, planted February, 1945. 59.



T.4.

Part of second shelter belt planting behind Government House. Foreground C. macrocarpa on ploughed ground planted spring 1943. Left foreground C. horizontalis Background Pinus maritima (not visible in long grass). Photo-





X  
T.5.

General view of "3 acre" tree reserve in corner of Common behind Government House. Showing young sitka Pinus contorta in background. Photographed summer 1944-45.

(265)



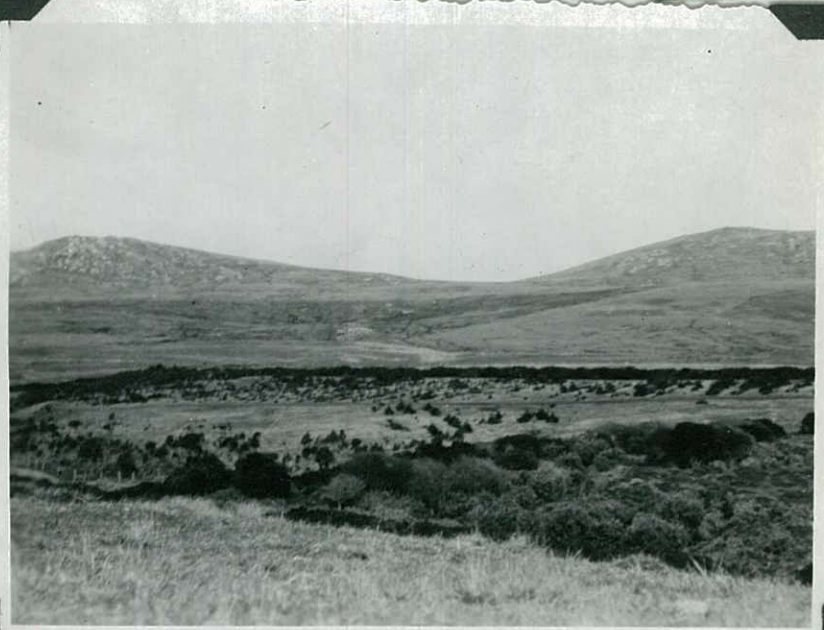
T.6. X

General view of "3 acre" tree reserve in corner of Common behind Government House. Showing general view of Pinus contorta in foreground and sitka spruce in background. Photographed summer 1944-45. (90)



T.7.

General view of tree planting area at Hill Cove. Fore-ground Gorse and Roble (Nothofagus antarctica middle distance sitka spruce left distance corner of enclosure Pine and Spruce. Photographed October, 1944. 245



Stat

T.8. X

Corner of planting of Scots fir made in 1896. Trees dying natural death. Photographed October, 1944.

243





T.9.

Corner of planting in old vegetable garden at Hill Cove. Made about 1893. Coast evergreen (unidentified) in foreground, white poplar and Scots Fir in background. Photographed October, 1944.

Probably *Nothofagus*  
*behuiloides*?

246



T.10.

Corner of 1896 planting at Hill Cove, showing *Fachina* bush (foreground), *Cairne* (evergreen) *Roble* (deciduous) growing in shelter of gorse hedge. Photographed October, 1944.

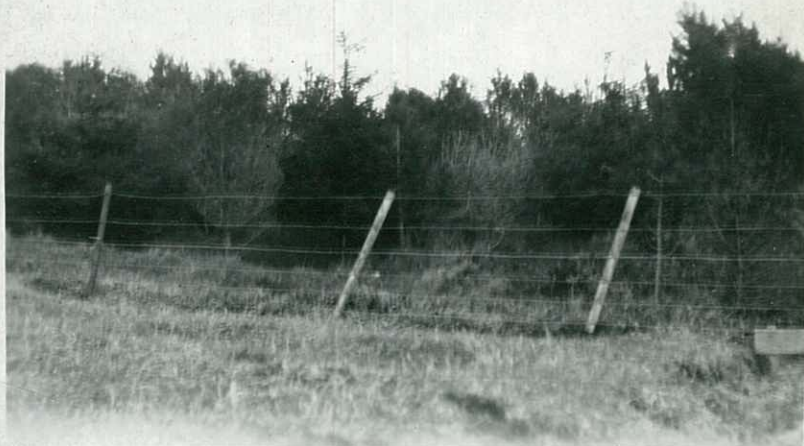
*Cairne* *Nothofagus elliptica*  
*Roble* *Nothofagus*  
*antarctica*?



T.11.

Part of Reed's planting at Hill Cove protected from stock Sitka spruce and Scots fir alone remain of the four varieties planted. Trees now growing approximately 1 foot per annum. Photographed October, 1944.

242







T.12.

Site of planting  
near Canachs,  
Roble and Pinus  
maritima planted

June 1943.

See O.6.

Photographed  
June, 1944.

100





V.1.

Vegetable crop  
Cabbages on Golf Cou  
patch, variety  
Photographed January  
1943.

112



298

V.2.

Cauliflowers, Galf  
paddock, West  
Government House,  
Walcheren variety.  
Photographed February  
1944.

117



V.3.

Vegetable production  
Government House from  
North West, showing  
cauliflower and swede  
patch. Photographed  
January, 1944.

113



V.4.

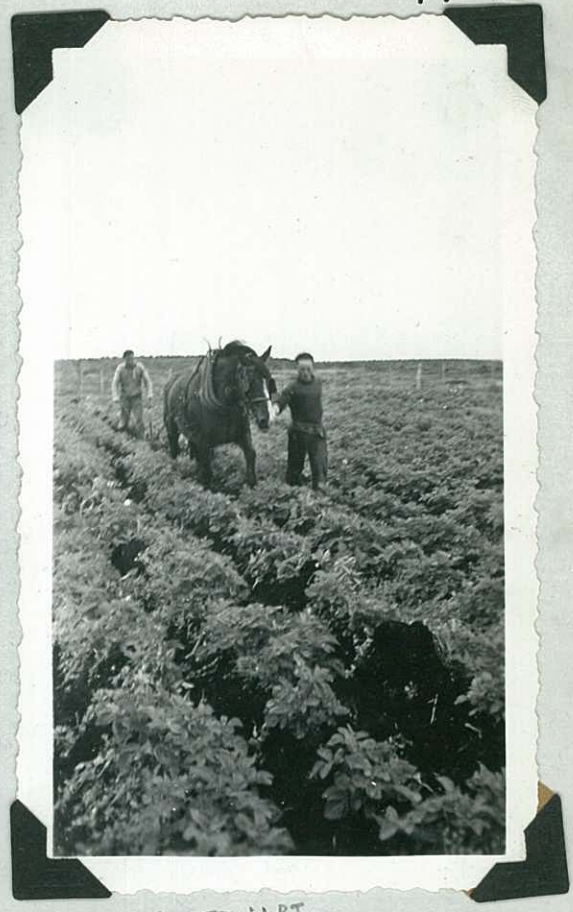
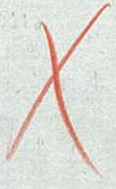
Vegetable production.  
Swedes, Hospital  
Garden. Photographed  
July 1941.





P.14.

Moulding up second potato crop, Eliza Cove. Photographed January, 1945. (264)



G STEWART. GENE WILLIAMS



P.15.

Moulding up second potato crop, Eliza Cove. Photographed January, 1945. 266





X

PL.10.

Ploughing at Old Wireless Paddock, Canshe, with Teal Inlet ploughing *and* tractor. August, 1941. Photographed February, 1942.

180



300  
271

PL.11.

Ploughing on "60 acre" paddock East of Felton Stream with Disc plough and Department tractor. Photographed February, 1942.

121



X  
PL.12.

Cross ploughing on "60 acre" with three furrow disc plough and Department tractor. Photographed autumn 1944.

123.



SYD. ALDRIDGE



PL.13.

Cross ploughing on "60 acre" with three furrow disc plough and Department tractor. Photographed autumn 1944.

124



SYD ALDRIDGE

PL.14.

Plough bog during first cross ploughing of "60 acre". Photographed autumn 1944.

125

X



PL.15.

Condition of land after first cross ploughing (Camera case measure). Photographed autumn 1944.

119

X



PL.16.

Drilling oats on "60 acre". Photographed April, 1944. (58)

X





PL.17.

First ploughing,  
East of Felton Street  
Little Genius  
plough and Depart-  
ment tractor. Photo  
graphed January, 1941

170



PL.18.

First tractor  
ploughing by Depart-  
ment, tractor and  
three furrow plough  
Old Wireless paddock  
Photographed August,  
1941.

177



PL.19.

Disc plough and  
tractor cross  
ploughing mould  
board furrow "60  
acre" block East  
of Felton Stream  
Photographed Autumn  
1944.

137



SYD. ALDRIDGE

PL.20.

Rough nature of  
ground after first  
cross ploughing,  
8 months after first  
ploughing and fallow-  
ing, Old Wireless  
Paddock, Canache.  
Photographed April,  
1942.

150





PM.1.

Effect of holding stock in paddock between Port Harriet and Bluff (native white grass outside, poa annua inside, difference due to stocking and consolidation). Photographed February 1945. (On track to Stanley).

128



PM.2.

Effect of holding stock in paddock between Port Harriet and Bluff Cove (Native white grass outside, Poa annua inside), difference due to stocking and consolidation). Photographed February, 1945. - Marquita.

127



PM.3.

Effect of holding stock in paddock between Port Harriet and Bluff Cove. (Native white grass outside, poa annua inside, difference due to stocking and consolidation.) Photographed February, 1945.

139



X

PM.4.

Effect of heavy grazing "60 acre" 2,500 sheep on for 4-6 weeks. Outside the fence grazed by cattle. Photographed April, 1945.







