

AGR/7/7
VOL 1

AGR/DOG/1#17

2457/C

AGR/7/7

2457/C

HYDATID DISEASE STATISTICS - FARMS

Year	Month	Day	Notes
22/5	PA		
PA	Dec 18	19/8	
Dec 20	PA		
Reg - d	Dec 19	3/9	
PA	PA	7	
Dec 5	4/6	Dec 20	B/10
PA	PA		
Dec 4	PA	Dec 21	3/11
PA			
AS 9			
PA			
Dec 10			
PA			
Dec 11			
PA			
Dec 12			
PA			
Dec 13			
PA			
Dec 14			
PA			
Dec 15	1/6		
PA			
Dec 16	9/6		
PA			

PEP
 26/5/86

ED)
HERY

COPY

Ref: 2457

Colonial Secretary's Office
Stanley, Falkland Islands.
20th November 1970

Dear Sir,

HYDATID DISEASE CONTROL

Measures taken in Stanley to assist in the control of the hydatid disease include the keeping of records at the Stanley Butchery showing the number of sheep slaughtered and the number of cases in which cysts are evident. The figures obtained in this manner are kept by the Agricultural Department and will eventually form useful data to assist in determining the progress being made in controlling the disease.

2. It will be appreciated that the more detailed information that can be obtained and recorded in this field, the greater our chances of success will be in combating the disease; and it is with this aspect in mind that I now approach you with the request that the offal from all sheep slaughtered on your farm, including those killed for mutton by shepherds, are examined for the presence of cysts and a record kept to show the number of sheep slaughtered during each 3-month period and the number of cases in which cysts have been detected.

3. To simplify the operation arrangements are being made for the Dog Dosing Returns to be amended to include provision for this additional information. The return can then be submitted to the Officer-in-Charge Agricultural Department in the usual way at the beginning of January, April, July and October of each year.

4. Your co-operation in this matter is greatly appreciated.

Yours faithfully,

(H.L. Bound)
for COLONIAL SECRETARY

To all Farm Managers.

Copy to S.O.A. for information

See 2

JE

No.

MEMORANDUM9th February, 1971. #R
2

It is requested that, in any reference to this memorandum the above number and date should be quoted.

From: Oic Agricultural Dept.,To: The Colonial Secretary,

Stanley, Falkland Islands.

STANLEY.

SUBJECT :- Hydatid Statistics

In response to your letter 2457 dated 20th November, 1970, the following information has now been received from Camp Inspectors: Farms not included in the following schedule have completely ignored your request, possibly because they have not in the past kept records. / x

<u>Farm</u>	<u>Number of sheep killed</u>	<u>Number of sheep infected</u>
** Teal Inlet	140	41
West Point Island	No records held	
Carcass Island	No infections recorded	
Saunders Island	27	15
Port Stephens	80% infected	
Lively Island	No records held	
Bluff Cove	30	7
Fitzroy	136	76
Darwin	522	268
Walker Creek	117	37
Bleaker Island	14	12
Sea Lion Island	22	-
** San Carlos	309	123
Port San Carlos	114	68
Salvador	No records held	
Rincon Grande	30	26
Green Patch	80	45
Port Louis	81	23
Johnson Harbour 83	83	61
Port Howard	316	55
Fox Bay East	225	126
Fox Bay West	106	18
Weddell Island	92	55
Dunnose Head	No records held	
Roy Cove	170	18
Bebble Island	238	113
North Arm	227	38

** Further information (infection relating to age) available if required.

9/E. To see file. J/17/2

AP. SHD to see. J/17/2
PA

MEMORANDUM

It is requested that, in any reference to this memorandum the above number and date should be quoted.



From: Oic. Agricultural Department,

Stanley, Falkland Islands.

11th May, 19 73.

To: The Chief Secretary,

STANLEY.

SUBJECT:- Question in Leg.Co. - Hydatid Disease.

The following is submitted in response to your Memorandum dated 9th inst.

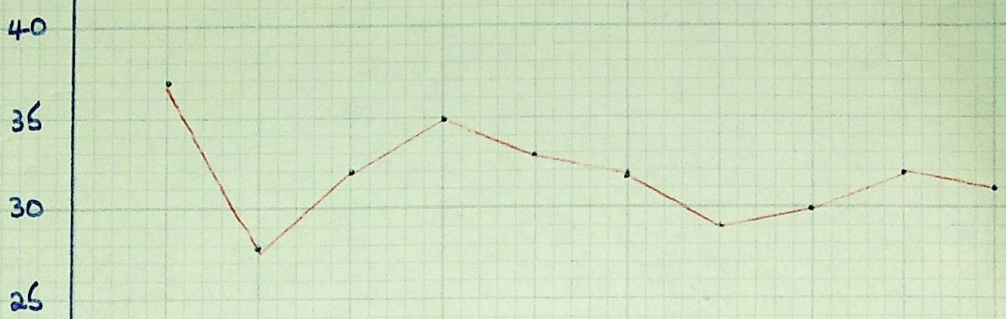
- Para. 2. (a) Farm managers forward quarterly returns of Hydatid Disease found in the sheep slaughtered on their respective farms. Graphs showing individual and Colony trends are enclosed herewith.
- (b) Dogs are dosed each quarter with Scoloban and returns made to me - specimen form attached.
- (c) Offal is disposed of by either incineration or by pitting for 28 days.
- (g) To date Scoloban is still the best drug on the market. Enquiries have been made regarding the drug Yeomason but we are advised that this is still in the experimental stage - correspondence in File AGR/7/12/C

J.P. [Signature]

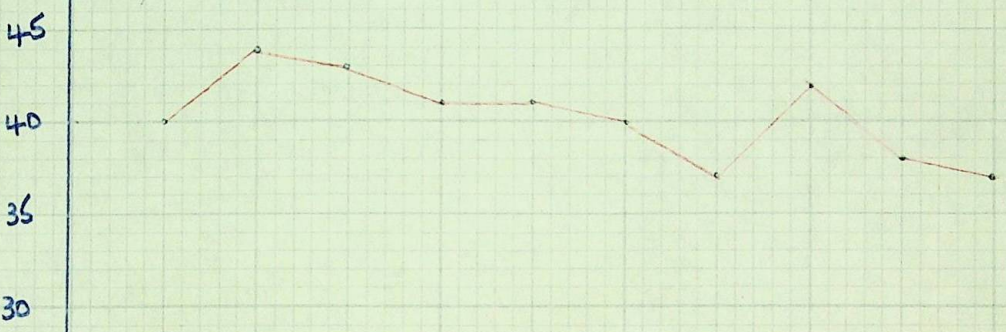
FALKLAND ISLANDS - HYDATID STATISTICS

%	1970		1971				1972				1973
	4TH	1ST	2ND	3RD	4TH	1ST	2ND	3RD	4TH	1ST	

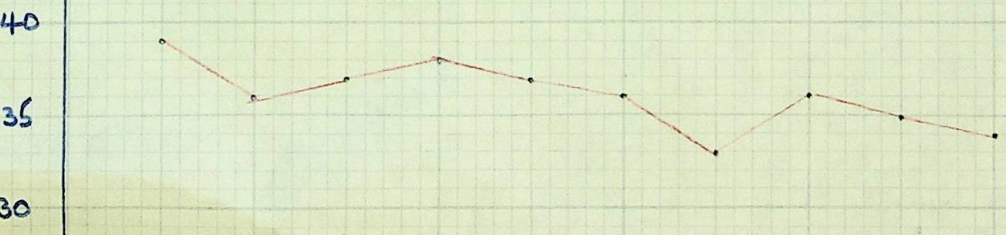
WEST FALKLAND



EAST FALKLAND



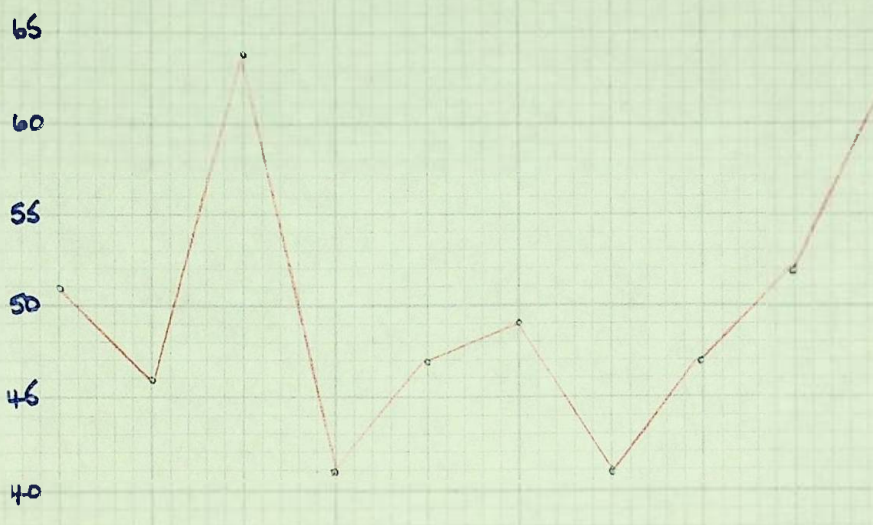
COLONY (TOTAL)



	1971				1972				1973
4TH	1ST	2ND	3RD	4TH	1ST	2ND	3RD	4TH	1ST

%

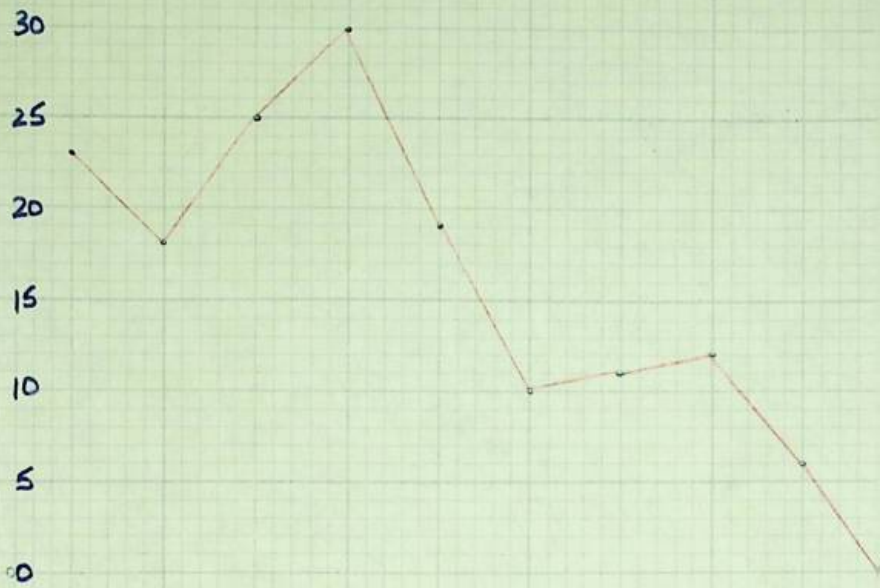
DARWIN



1970 1971 1972 1973
4TH 1ST 2ND 3RD 4TH 1ST 2ND 3RD 4TH 1ST

0%

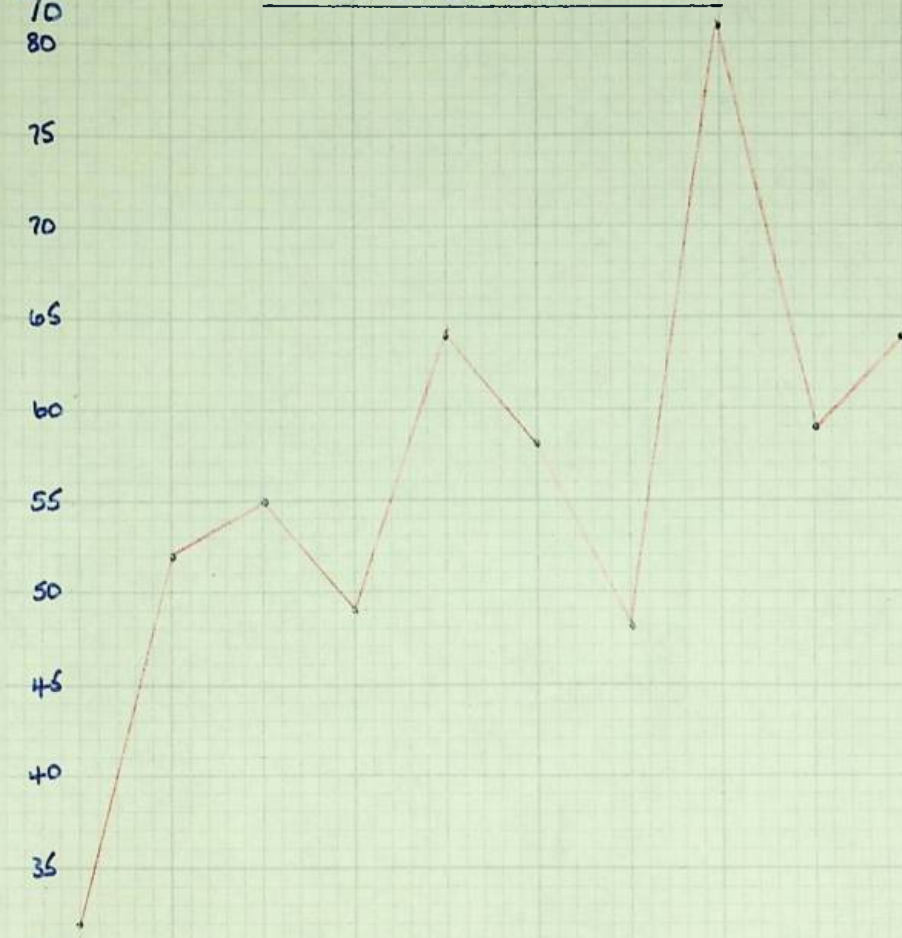
BLUFF COVE



1970	1971				1972				1973
4TH	1ST	2ND	3RD	4TH	1ST	2ND	3RD	4TH	1ST

0%
80
75
70
65
60
55
50
45
40
35
30

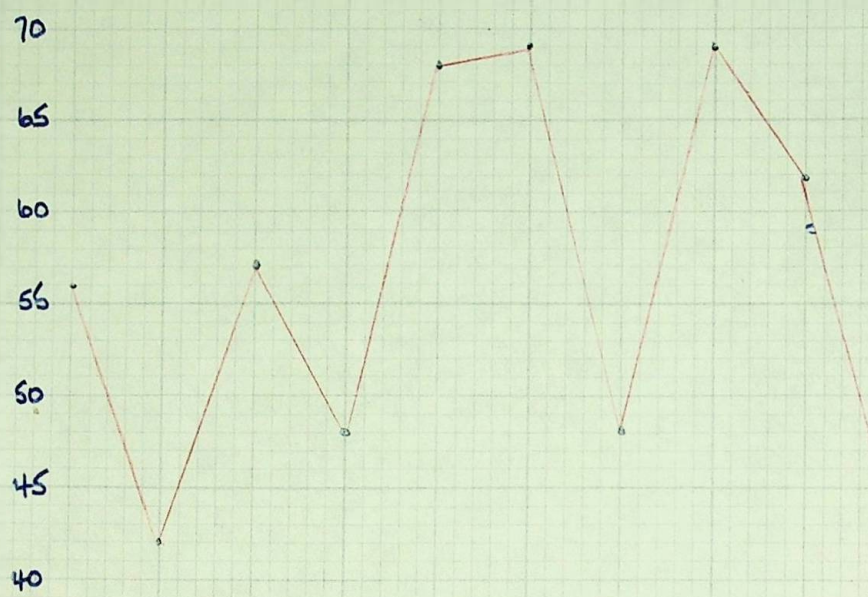
WALKER CREEK



1970	1971				1972				1973
4TH	1ST	2ND	3RD	4TH	1ST	2ND	3RD	4TH	1ST

%

FITZROY

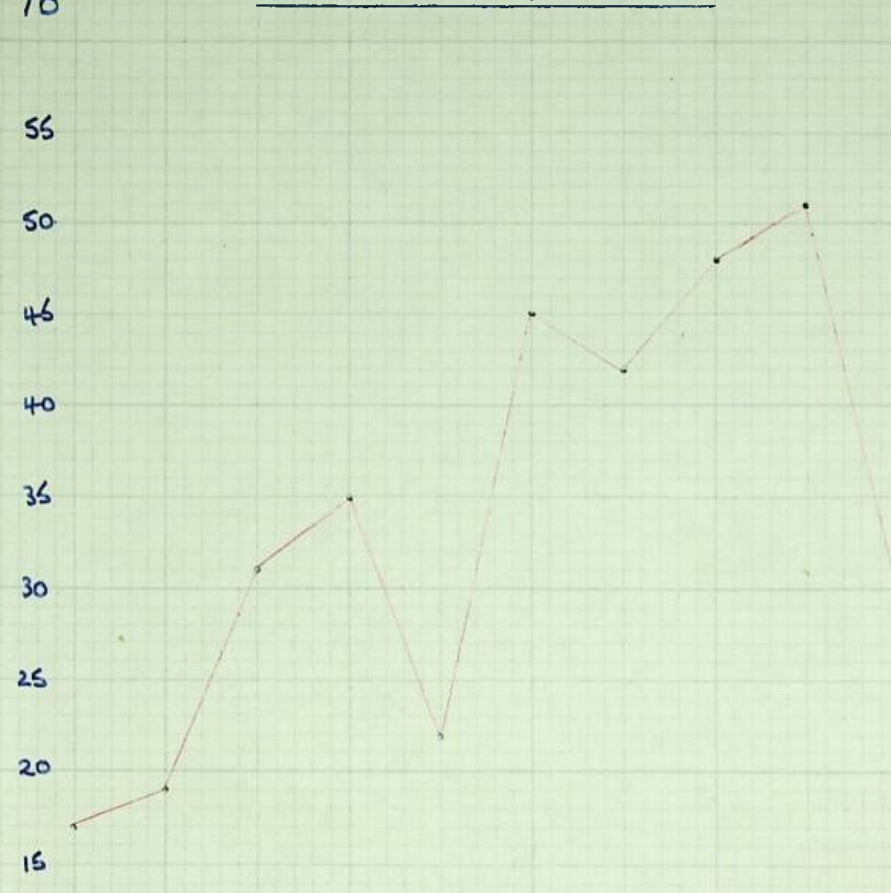


1970	1971				1972				1973
4TH	1ST	2ND	3RD	4TH	1ST	2ND	3RD	4TH	1ST

%

NORTH ARM

55
50
45
40
35
30
25
20
15



1970	1971				1972				1973
4TH	1ST	2ND	3RD	4TH	1ST	2ND	3RD	4TH	1ST

0%
90
85
80
75
70
65
60
55
50
45

BLEAKER ISLAND



1970	1971				1972				1973
1 TH	1 ST	2 ND	3 RD	4 TH	1 ST	2 ND	3 RD	4 TH	1 ST

%

SEA LION ISLAND

35

30

25

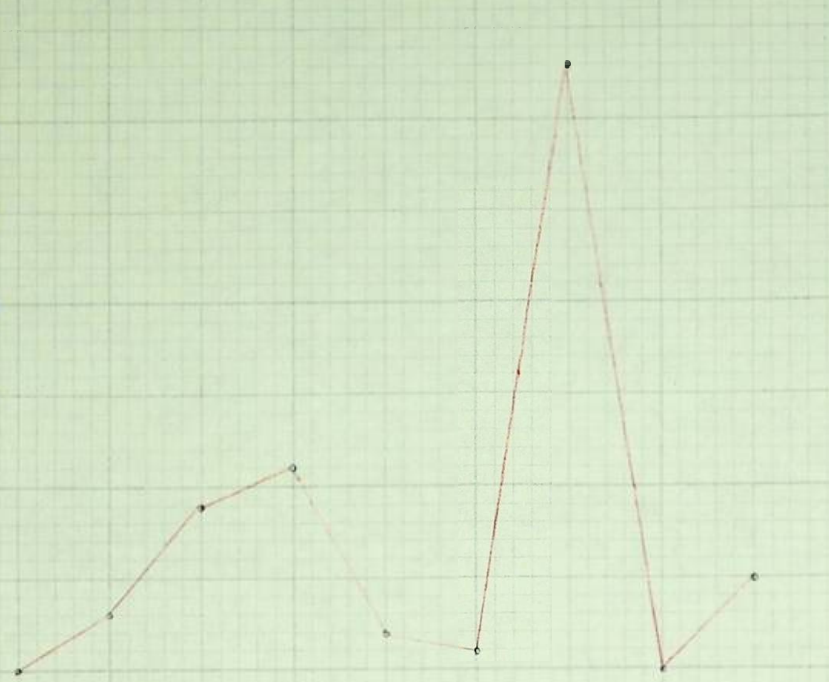
20

16

10

5

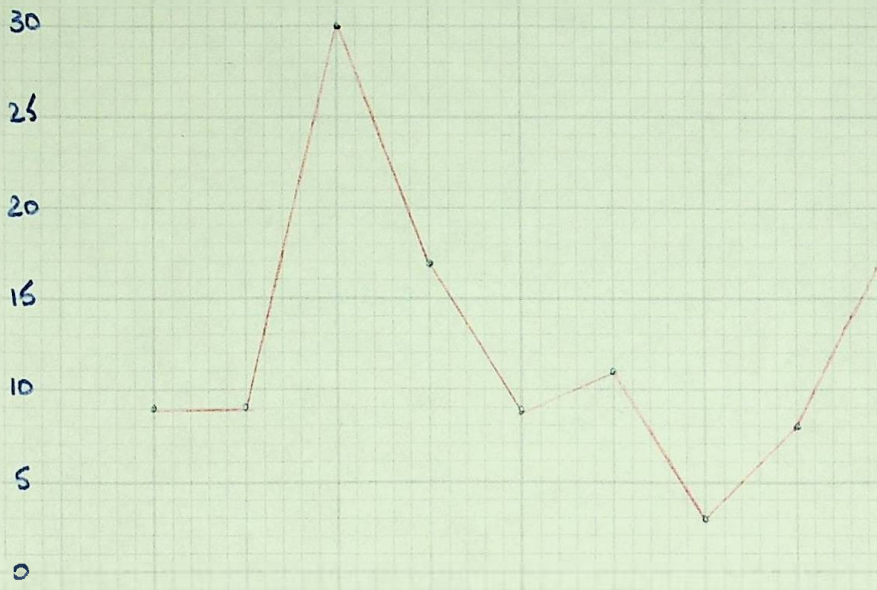
0



1970	1971				1972				1973
4TH	1ST	2ND	3RD	4TH	1ST	2ND	3RD	4TH	1ST

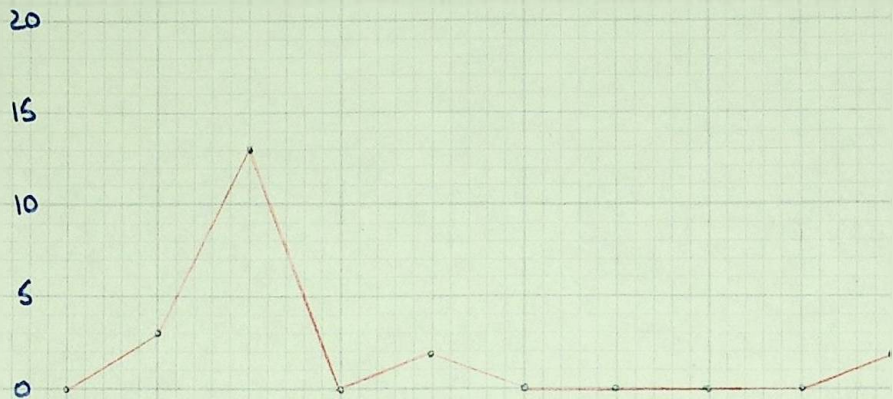
%

LIVELY ISLAND



1970	1971				1972				1973
4TH	1ST	2ND	3RD	4TH	1ST	2ND	3RD	4TH	1ST

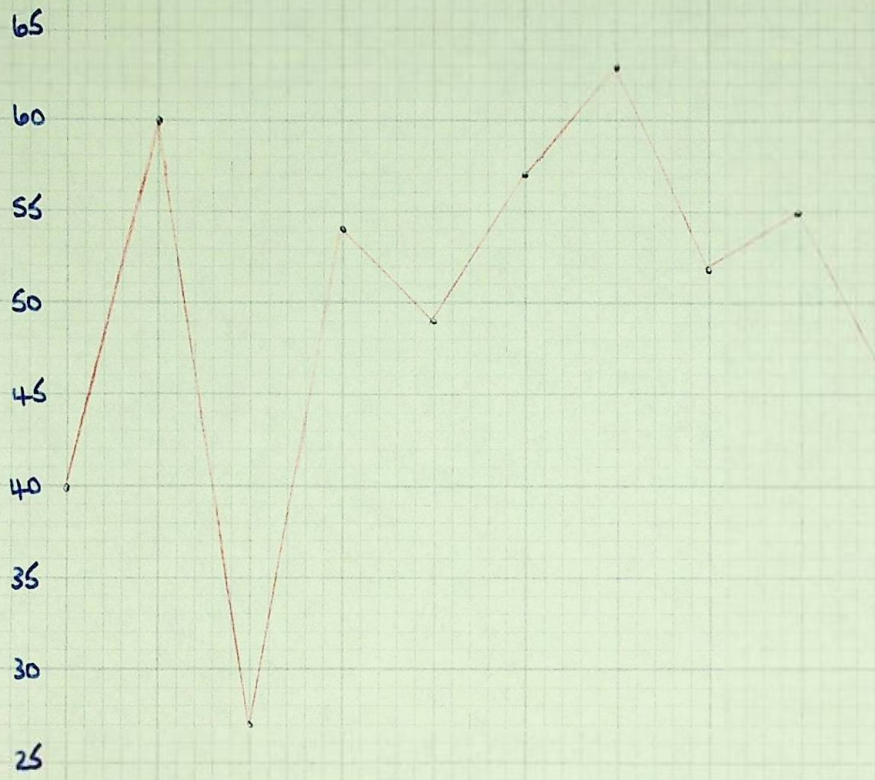
0% SPEEDWELL IS.



1970 1971 1972 1973
4TH 1ST 2ND 3RD 4TH 1ST 2ND 3RD 4TH 1ST

%

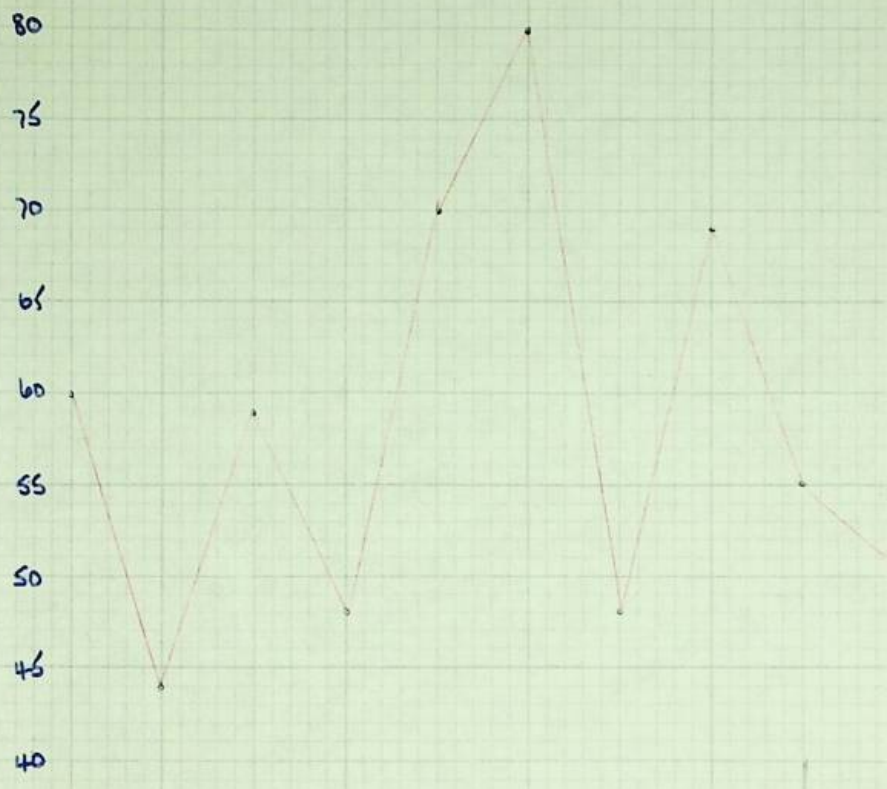
SAN CARLOS



1970	1971				1972				1973
4TH	1ST	2ND	3RD	4TH	1ST	2ND	3RD	4TH	1ST

%

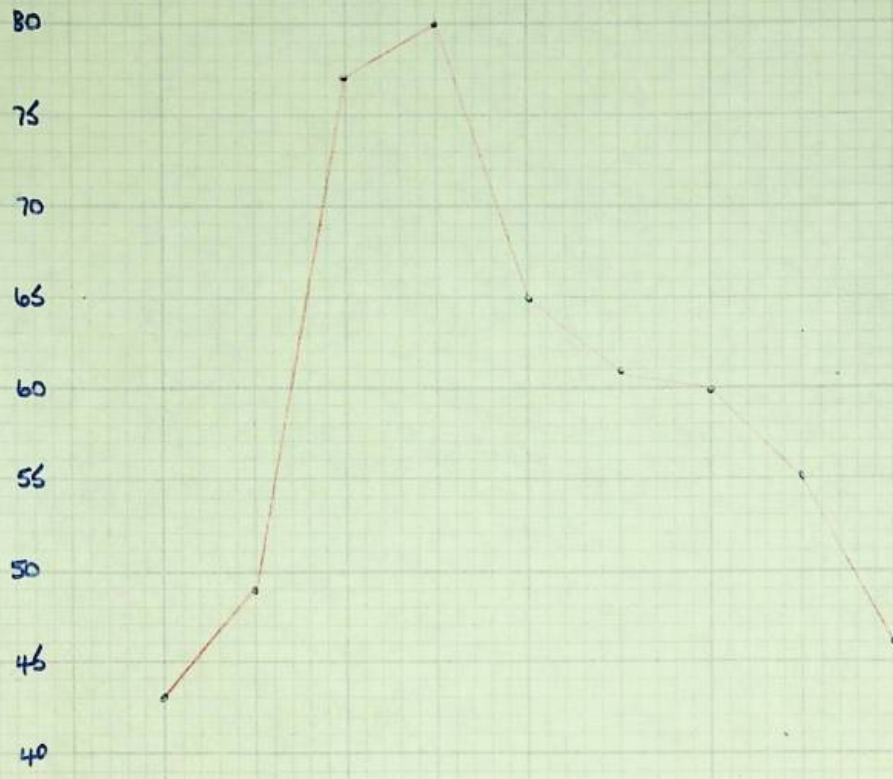
PORT SAN CARLOS.



1970	1971				1972				1973
4TH	1ST	2ND	3RD	4TH	1ST	2ND	3RD	4TH	1ST

%

DOUGLAS STATION

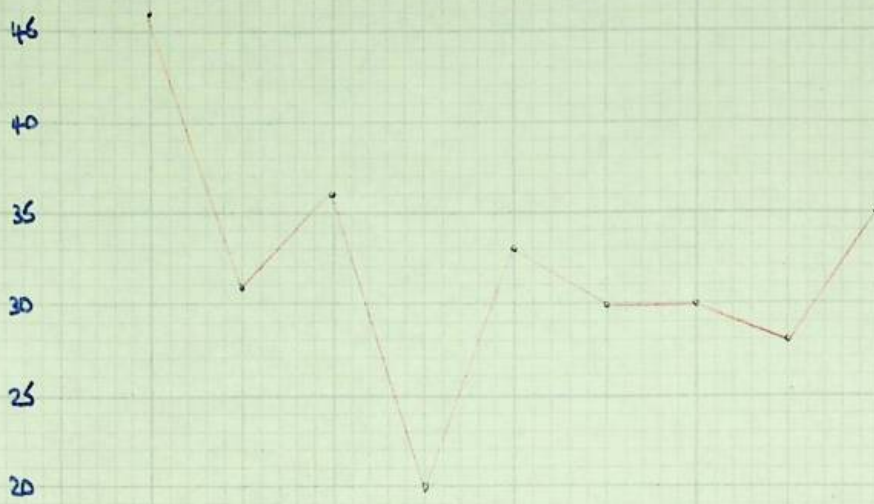


1970	1971				1972				1973
4TH	1ST	2ND	3RD	4TH	1ST	2ND	3RD	4TH	1ST

%

SALVADOR

50
45
40
35
30
25
20

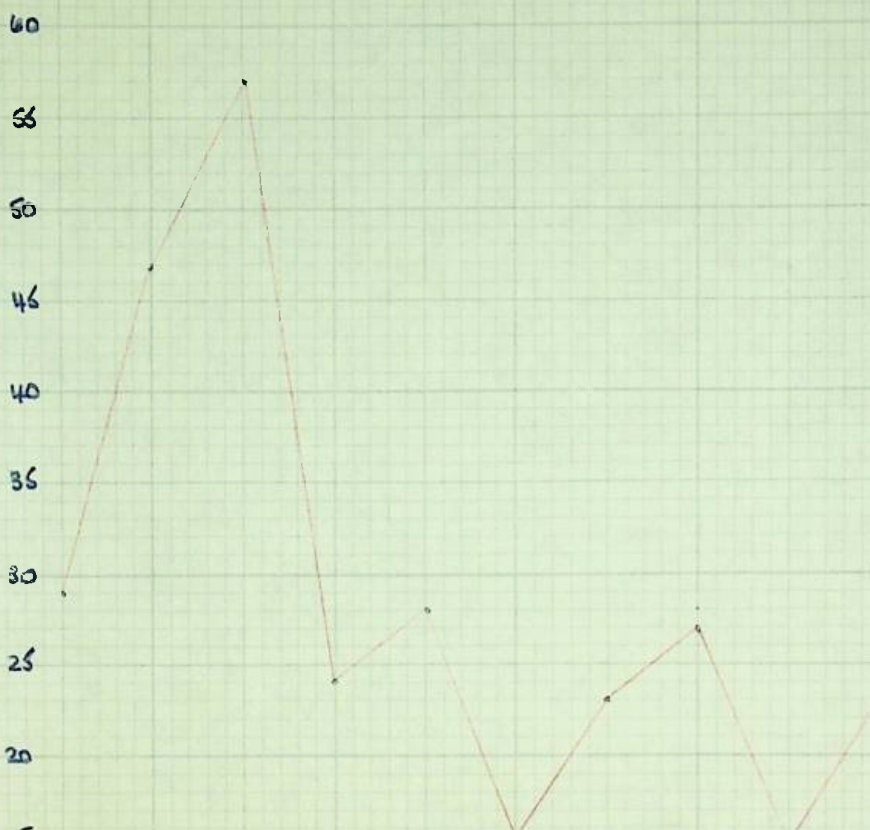


1970	1971				1972				1973
4TH	1ST	2ND	3RD	4TH	1ST	2ND	3RD	4TH	1ST

%

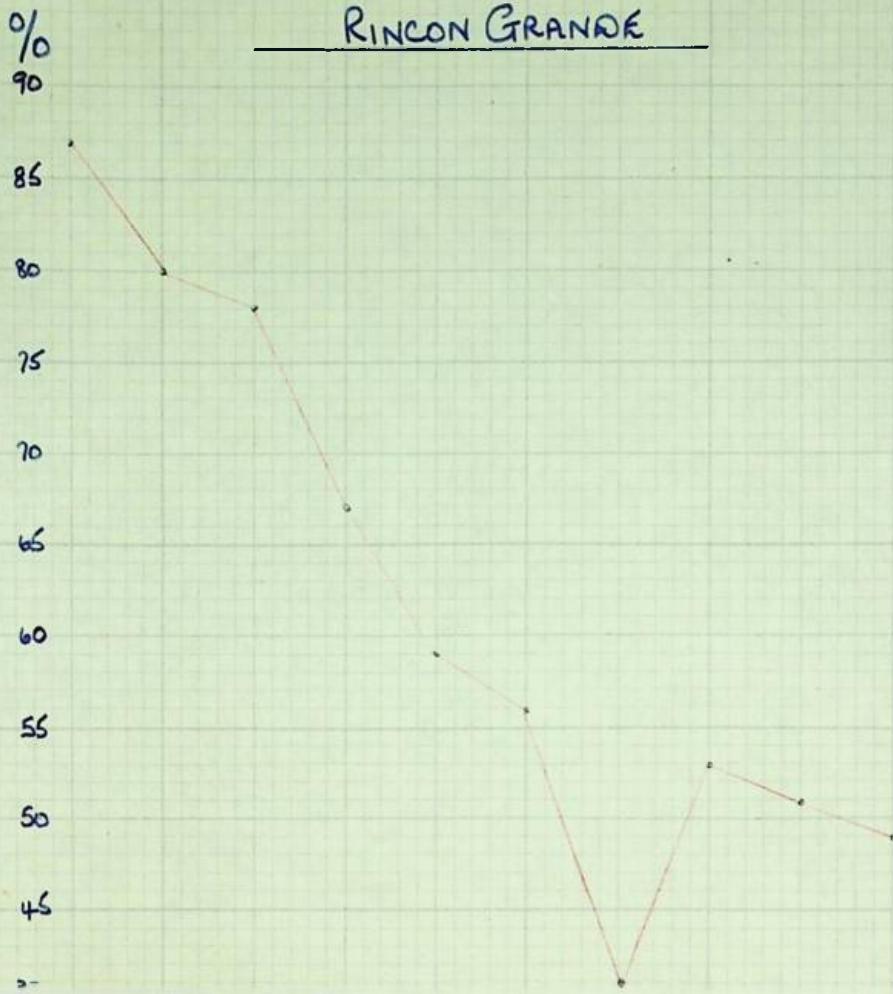
TEAL INLET

60
55
50
45
40
35
30
25
20
15



1970	1971				1972				1973
4TH	1ST	2ND	3RD	4TH	1ST	2ND	3RD	4TH	1ST

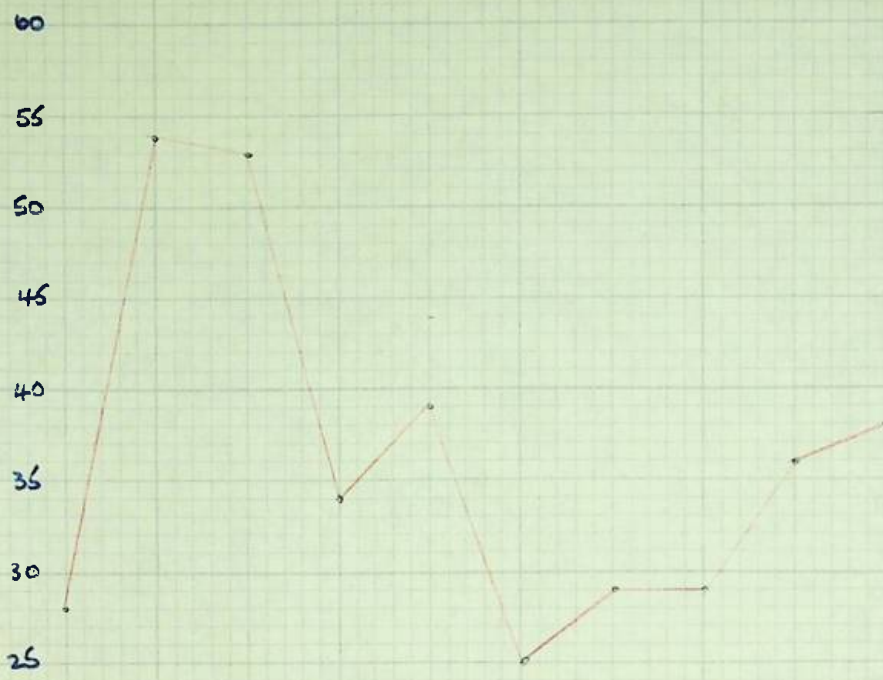
RINCON GRANDE



1970	1971				1972				1973
4TH	1ST	2ND	3RD	4TH	1ST	2ND	3RD	4TH	1ST

%

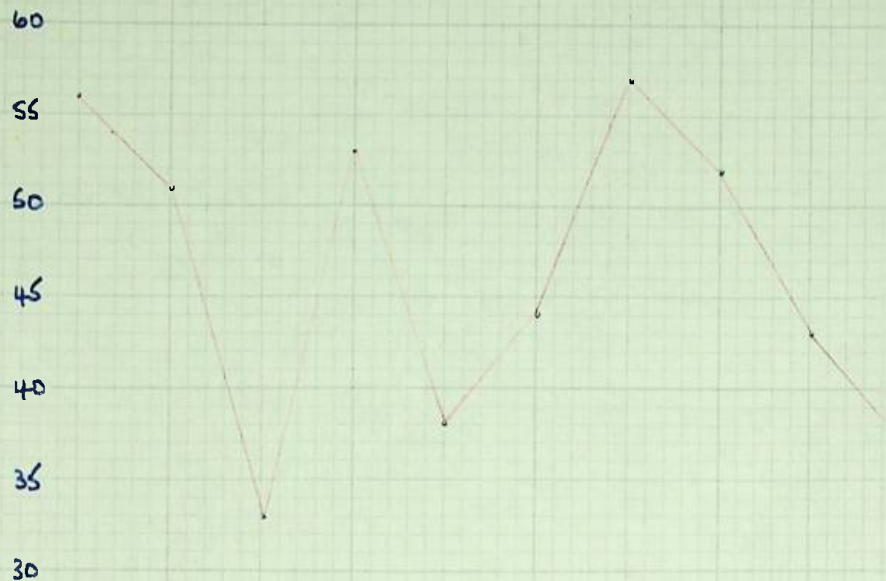
PORT LOUIS



1970	1971				1972				1973
4TH	1ST	2ND	3RD	4TH	1ST	2ND	3RD	4TH	1ST

%

GREEN PATCH



1970	1971				1972				7 →
4TH	1ST	2ND	3RD	4TH	1ST	2ND	3RD	4TH	1ST

0%

JOHNSON HARBOUR

75

70

65

60

55

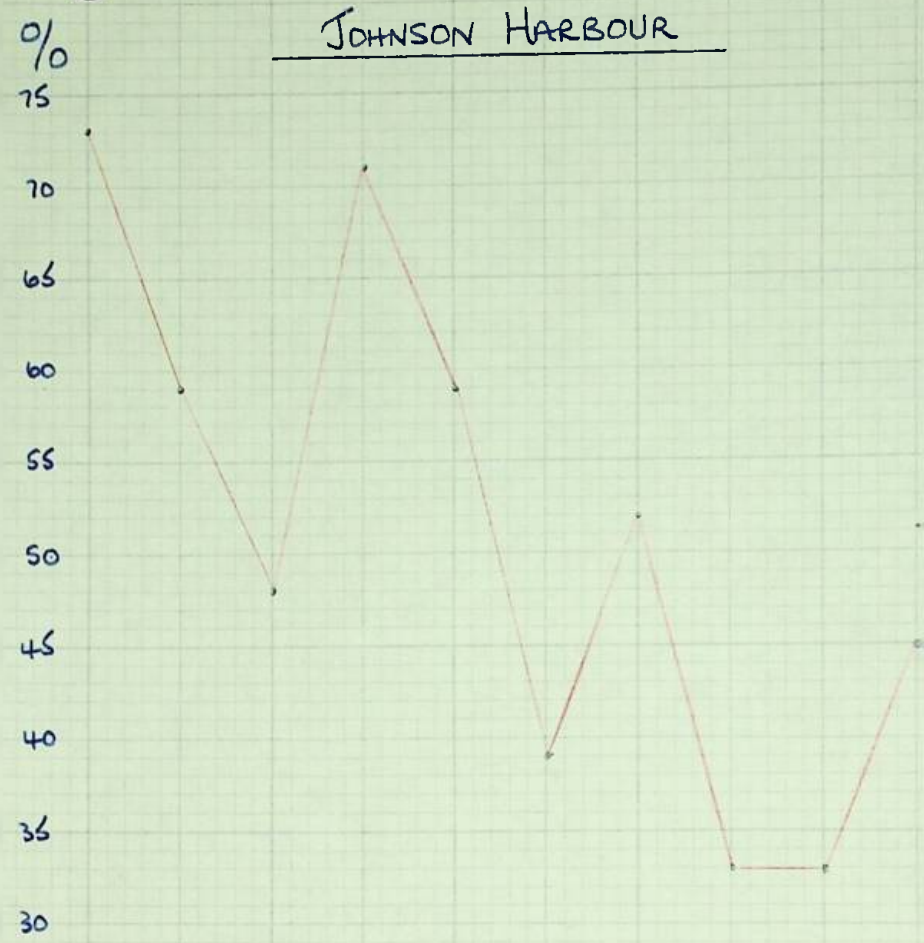
50

45

40

35

30



10
4TH 1ST 2ND 3RD 4TH 1ST 2ND 3RD 4TH 1ST

1971

1972

1973

%

GEORGE ISLAND

25

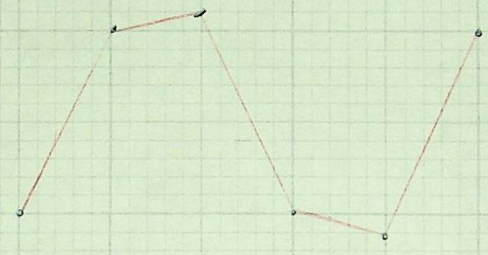
20

15

10

5

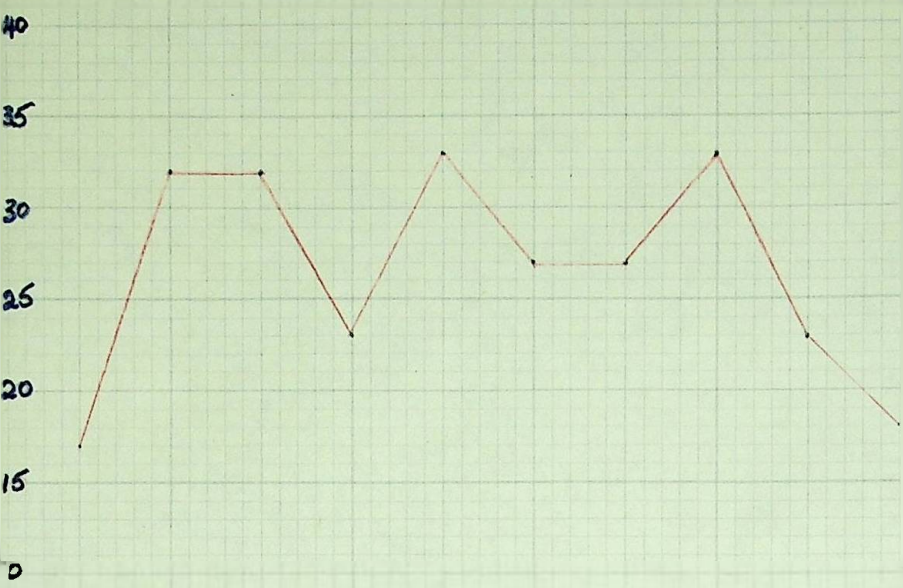
0



	1971				1972				1973
H	1ST	2ND	3RD	4TH	1ST	2ND	3RD	4TH	1ST

%

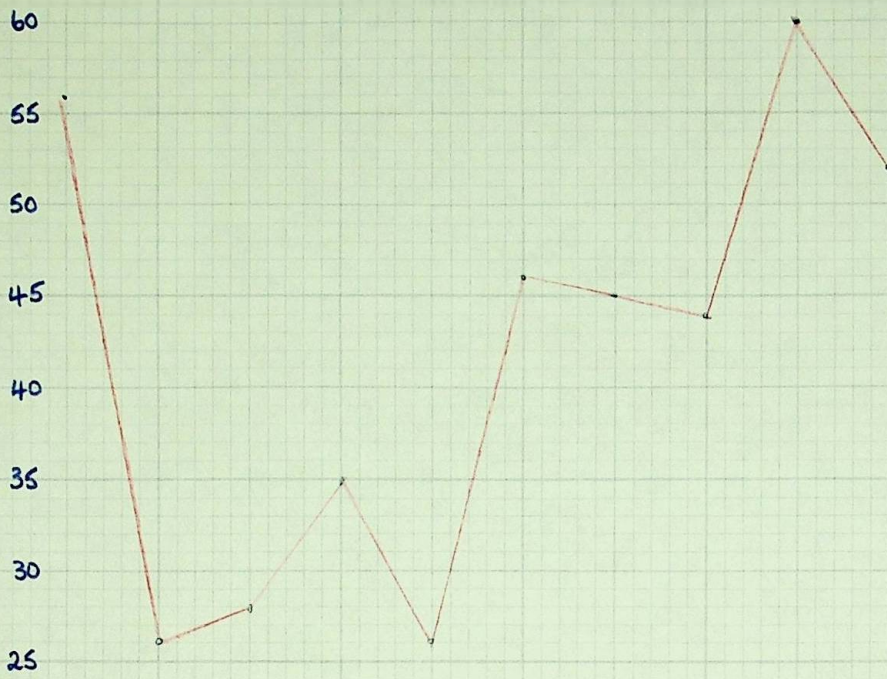
PORT HOWARD



1970	1971				1972				1973
1 ST	2 ND	3 RD	4 TH	1 ST	2 ND	3 RD	4 TH	1 ST	

●
%

FOX-BAY-EAST



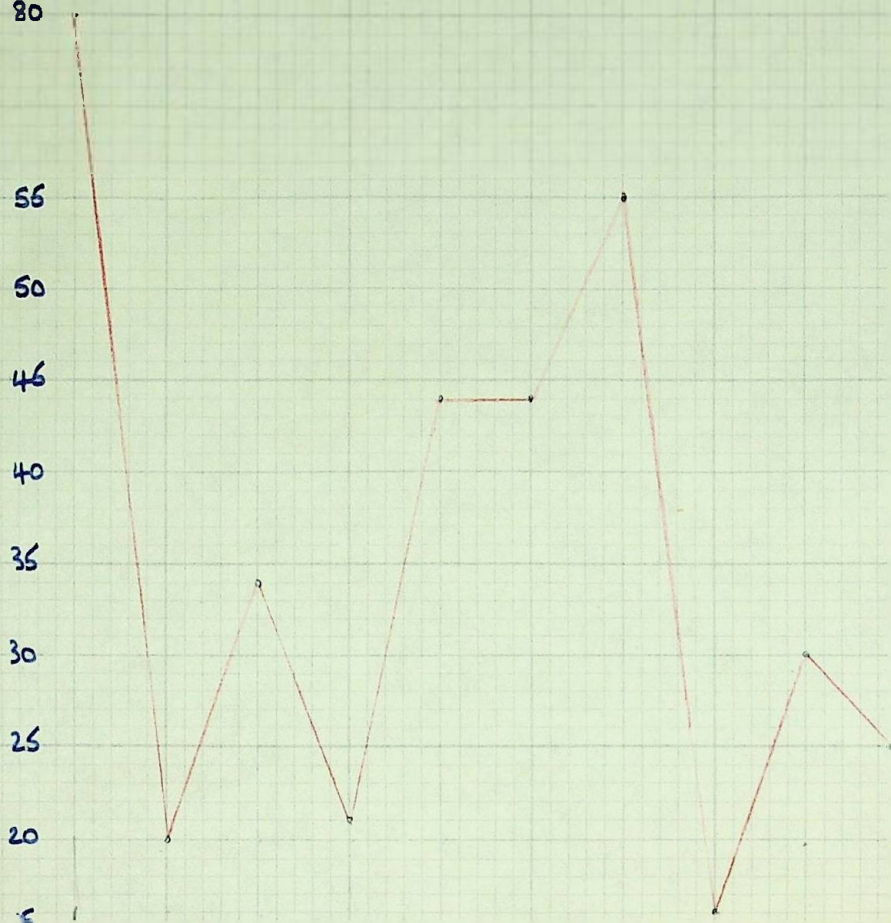
710	1971				1972				1973
4TH	1ST	2ND	3RD	4TH	1ST	2ND	3RD	4TH	1ST



170	1971				1972				1973
4TH	1ST	2ND	3RD	4TH	1ST	2ND	3RD	4TH	1ST

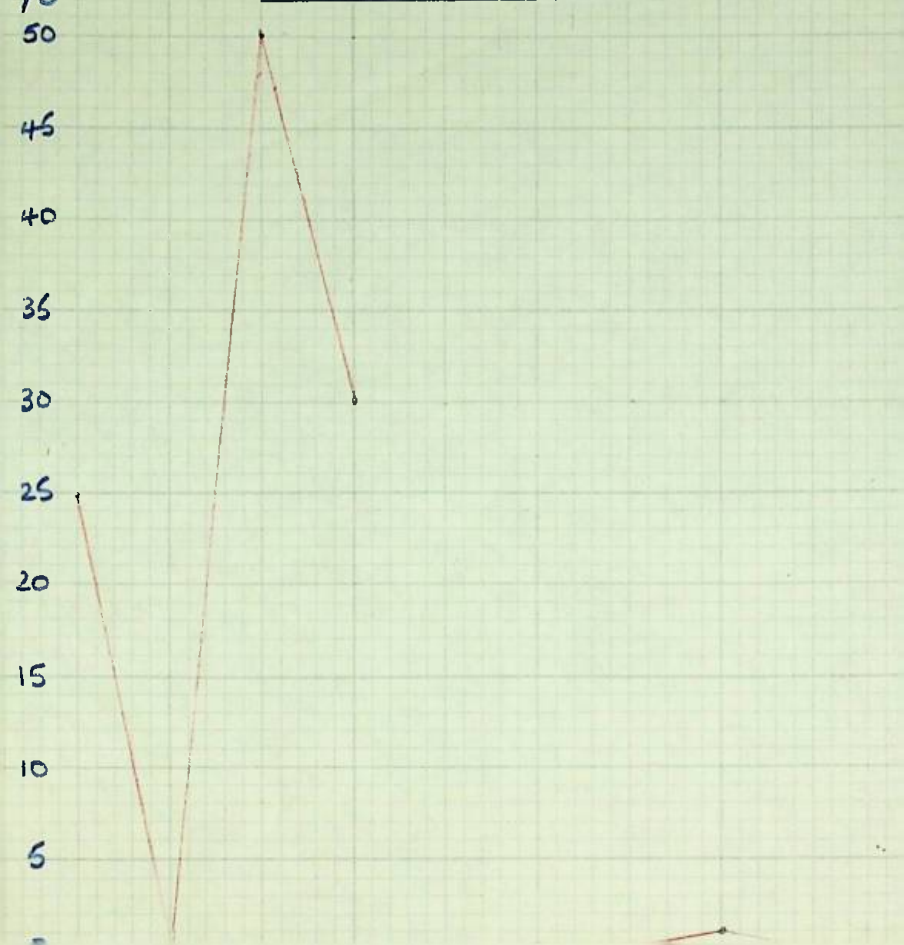
PORT STEPHENS

0/0
80



1970	1971				1972				1973
4TH	1ST	2ND	3RD	4TH	1ST	2ND	3RD	4TH	1ST

NEW ISLAND



1970	1971				1972				1973
4TH	1ST	2ND	3RD	4TH	1ST	2ND	3RD	4TH	1ST

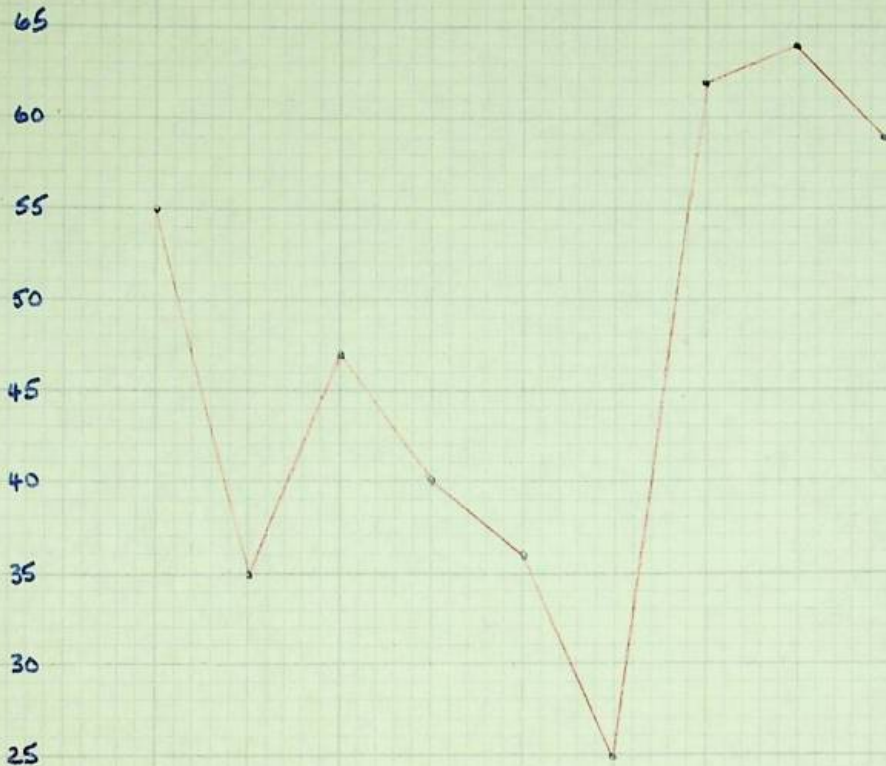
0/0

WEDDELL ISLAND



1970	1971				1972				1973
4TH	1ST	2ND	3RD	4TH	1ST	2ND	3RD	4TH	1ST

0/0 DUNNOSE HEAD



.470	1971				1972				1973
4TH	1ST	2ND	3RD	4TH	1ST	2ND	3RD	4TH	1ST

%

CHARTRES

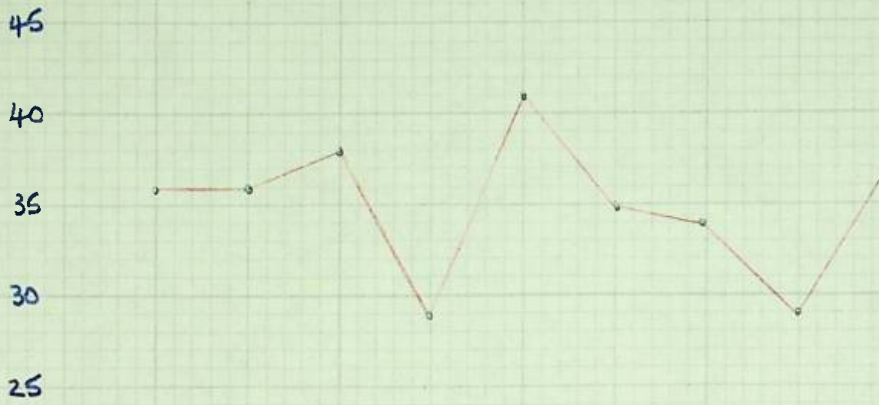
45

40

35

30

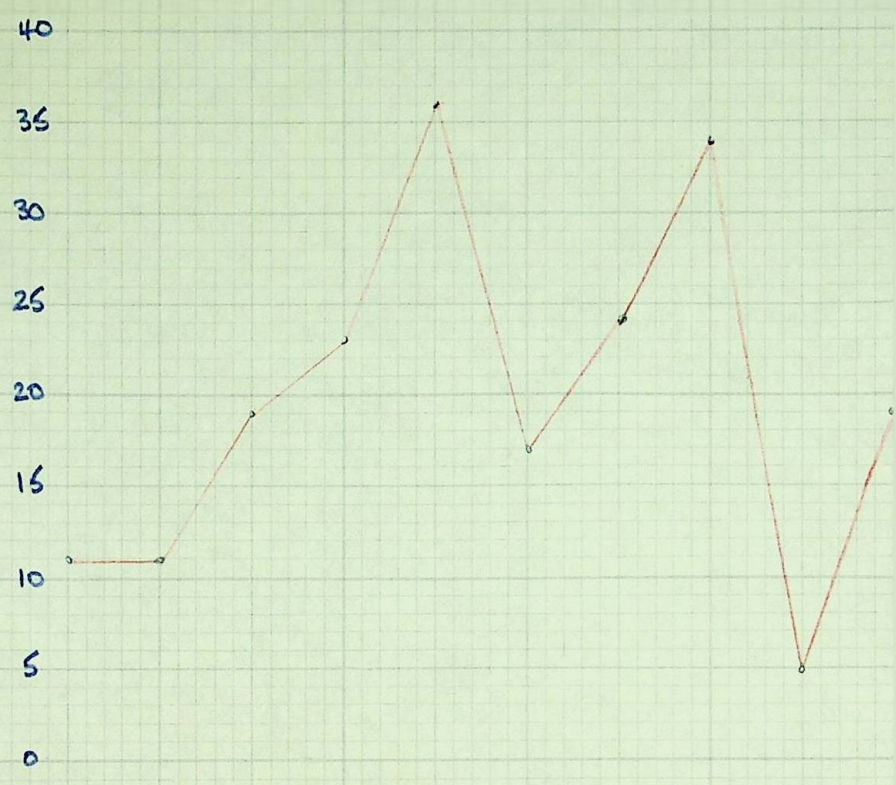
25



1970	1971				1972				1973
4TH	1ST	2ND	3RD	4TH	1ST	2ND	3RD	4TH	1ST

%

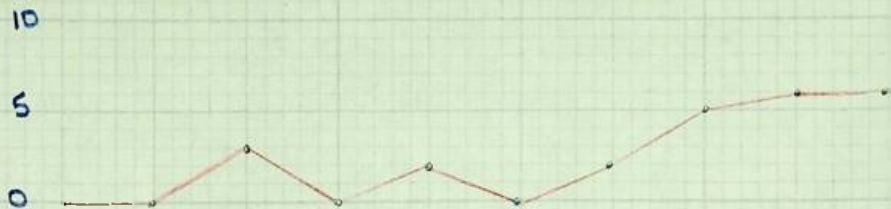
ROY COVE



1970	1971				1972				1973
4TH	1ST	2ND	3RD	4TH	1ST	2ND	3RD	4TH	1ST


%

WEST POINT ISLAND



1970	1971				1972				1973
4TH	1ST	2ND	3RD	4TH	1ST	2ND	3RD	4TH	1ST

% CARCASS ISLAND



1970	1971				1972				1973
4TH	1ST	2ND	3RD	4TH	1ST	2ND	3RD	4TH	1ST

%

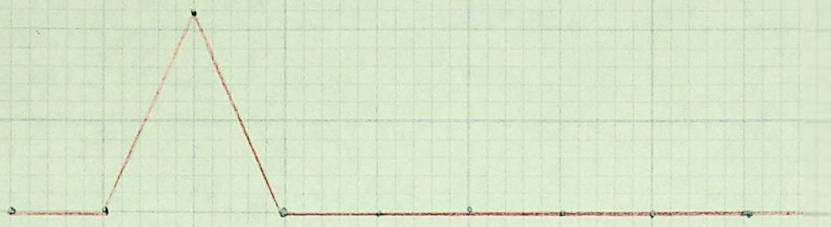
SEDGE ISLAND

15

10

5

0



1970	1971				1972				1973
4TH	1ST	2ND	3RD	4TH	1ST	2ND	3RD	4TH	1ST

%

HILL COVE

65

60

55

50

45

40

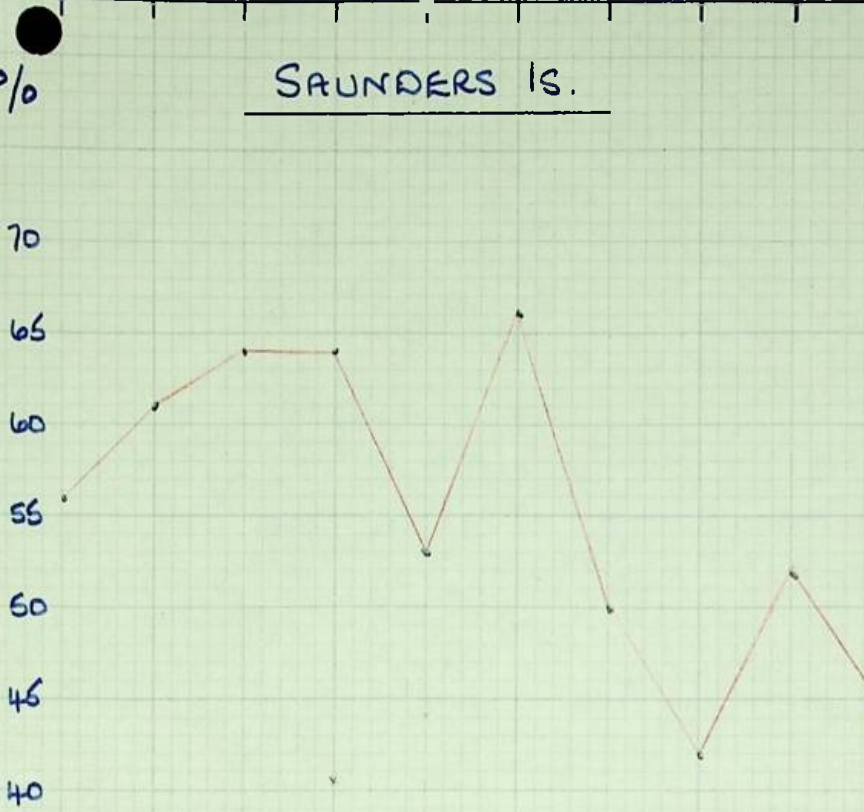
Figures not available from
this farm ???

1970 1971 1972 1973

4TH 1ST 2ND 3RD 4TH 1ST 2ND 3RD 4TH 1ST

% SAUNDERS IS.

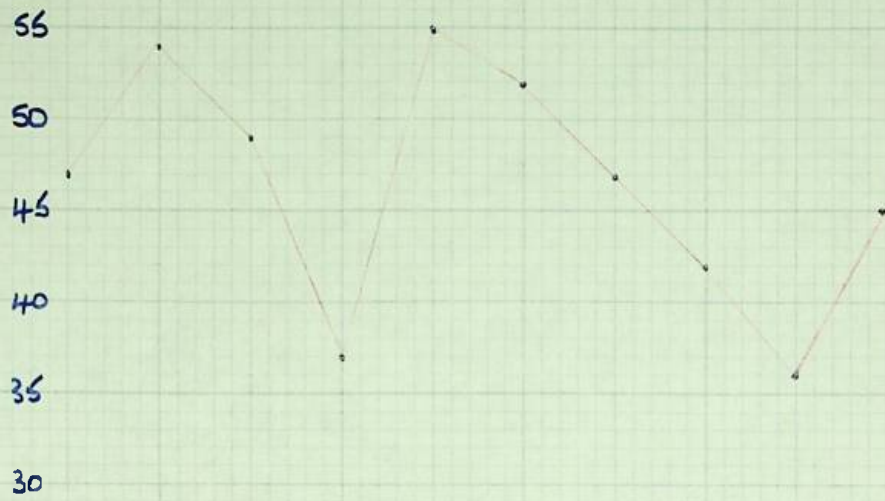
70
65
60
55
50
45
40



70	1971				1972				1973
4TH	1ST	2ND	3RD	4TH	1ST	2ND	3RD	4TH	1ST

●
%

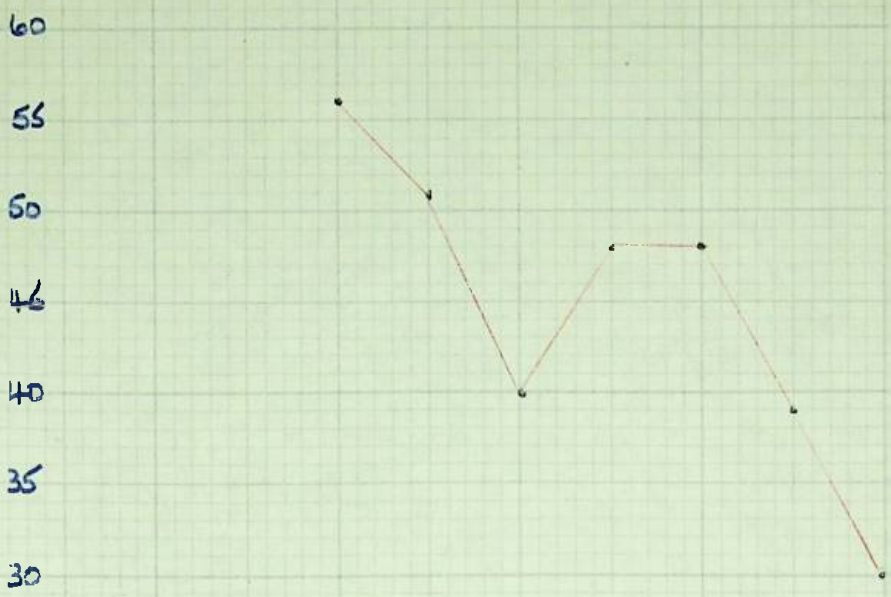
PEBBLE ISLAND



1970	1971				1972				1973
4TH	1ST	2ND	3RD	4TH	1ST	2ND	3RD	4TH	1ST

%

KEPPEL ISLAND



MEMORANDUM

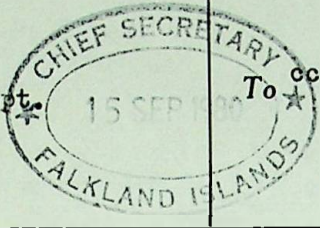
Reference

It is requested that this number and date should be quoted.

AR9/7/7

Date ...15th September, 1980....

From Ag O i/c Agricultural Dept.



The Chief Secretary,
Senior Medical Officer,
Veterinary Officer,
Mr. S. Miller, Chairman,
Hydatid Committee.

Subject:- HYDATID DISEASE

I hereby submit the following particulars relating to Hydatid Disease found in sheep examined at the Stanley Butchery:-

<u>STATION</u>	<u>MONTH</u>	<u>TOTAL EXAMINED</u>	<u>TOTAL CLEAN</u>	<u>HYDATIDS</u>	<u>BOILS</u>	<u>BLADDERS</u>	<u>OTHERS</u>
SPEEDWELL ISLAND	AUGUST	45	24	1	14	3	3
		39	20	2	11	1	5
		39	29	1	7	1	1
		64	50	2	9	1	2
		52	35	1	13	-	3
		38	23	-	9	2	4
JOHNSON HARBOUR	AUGUST	55	31	1	18	-	5
		90	72	12	-	3	3
		36	22	6	4	4	-
		37	20	10	4	3	-
MOODY VALLEY	AUGUST	40	28	7	-	5	-
		1	1	-	-	-	-

J. D. Hall
Ag. O i/c Agricultural Dept.

5

MEMORANDUM

Reference AGR/17/7

Date 10th April 1980

It is requested that this number and date should be quoted.



From O i/c Agriculture

To cc The Chief Secretary,
Senior Medical Officer,
Veterinary Officer,
Mr. S. Miller, Stanley.

Subject:- HYDATID DISEASE

I hereby submit the following particulars relating to Hydatid Disease found in sheep examined at the Stanley Butchery.

<u>STATION</u>	<u>MONTH</u>	<u>TOTAL EXAMINED</u>	<u>TOTAL CLEAN</u>	<u>HYDATIDS</u>	<u>BOILS</u>	<u>BLADDERS</u>	<u>OTHERS</u>
JOHNSON HARBOUR	FEBRUARY	60	49	10	-	1	-
		19	11	-	4	4	-
		48	38	6	-	3	1
		46	29	15	1	2	-
GEORGE ISLAND	FEBRUARY	20	13	-	-	3	5
		32	23	3	4	1	1
		40	21	1	12	5	1
		76	61	7	5	1	2
		55	41	1	10	1	2
		40	29	3	4	2	2
		26	18	2	4	1	1
		60	45	1	5	3	6
		34	22	-	5	-	7
		19	17	-	2	-	-
		2	2	-	-	-	-
TEAL INLET	FEBRUARY	20	16	-	2	2	-
		58	38	2	13	4	1
TEAL INLET	MARCH	41	28	3	10	-	-
		10	4	-	2	2	2
SALVADOR	MARCH	23	14	2	1	1	5
		73	61	9	1	1	1
		28	23	1	-	2	2
		50	41	1	1	3	4
		35	21	6	8	-	-
PT SAN CARLOS	MARCH	12	7	-	5	-	-
		34	28	1	1	4	-
		42	35	-	2	5	-
		53	48	1	3	1	-
		22	18	2	1	-	1
MOODY VALLEY FM	February	56	50	2	3	1	-
		54	51	1	2	-	-
		1	0	1	-	-	-
		2	1	1	-	-	-
MOODY VALLEY FM	MARCH	1	0	-	1	-	-
		4	4	-	-	-	-
		3	2	1	-	-	-

J. ...
O i/c Agriculture

MEMORANDUM

(6)

Refer AGR/7/7

Date10th June 1980.....

It is requested that this number and date should be quoted.

From Ag O i/c Agriculture



To c.c. The Chief Secretary
Senior Medical Officer,
Veterinary Officer,
Mr. S. Miller, Stanley.

Subject:- HYDATID DISEASE

I hereby submit the following particulars relating to Hydatid Disease found in sheep examined at the Stanley Butchery.

<u>STATION</u>	<u>MONTH</u>	<u>TOTAL EXAMINED</u>	<u>TOTAL CLEAN</u>	<u>HYDATIDS</u>	<u>BOILS</u>	<u>BLADDERS</u>	<u>OTHERS</u>
JOHNSON HARBOUR	FEBRUARY	60	49	10	-	1	-
		19	11	-	4	4	-
		48	38	6	-	3	1
		46	29	15	1	2	-
MOODY VALLEY	FEBRUARY	1	-	1	-	-	-
		2	1	1	-	-	-
GEORGE ISLAND	FEBRUARY	20	13	-	-	3	5
		32	23	3	4	1	1
		40	21	1	12	5	1
		76	61	7	5	1	2
		55	41	1	10	1	2
		40	29	3	4	2	2
		26	18	2	4	1	1
		60	45	1	5	3	6
		34	22	-	5	-	7
		19	17	-	2	-	-
2	2	-	-	-	-		
TEAL INLET	FEBRUARY	20	16	-	2	2	-
		58	38	2	13	4	1
TEAL INLET	MARCH	41	28	3	10	-	-
		10	4	-	2	2	2
SALVADOR	MARCH	23	14	2	1	1	5
		73	61	9	1	1	1
		28	23	1	-	2	2
		50	41	1	1	3	4
		35	21	6	8	-	-
MOODY VALLEY	MARCH	3	2	1	-	-	-
		1	-	-	1	-	-
		4	4	-	-	-	-
FIC	MARCH	3	1	-	1	-	1
PORT SAN CARLOS	MARCH	12	7	-	5	-	-
		34	28	1	1	4	-
		42	35	-	2	5	-
		53	48	1	3	1	-
		22	18	2	1	-	1
		56	50	2	3	1	-
		54	51	1	2	-	-

cont/d

<u>STATION</u>	<u>MONTH</u>	<u>TOTAL EXAMINED</u>	<u>TOTAL CLEAN</u>	<u>HYDATIDS</u>	<u>BOILS</u>	<u>BLADDERS</u>	<u>OTHERS</u>
MOODY VALLEY	APRIL	2	1	-	1	-	-
PORT SAN CARLOS	APRIL	31	29	2	-	-	-
		49	36	-	3	5	5
		60	49	1	5	2	3
		31	21	-	4	4	2
		14	11	-	2	1	-
SAN CARLOS	APRIL	54	49	2	3	-	-
		48	42	2	4	-	-
		36	29	2	5	-	-
		52	48	2	2	-	-
		36	27	-	6	-	3
		42	36	3	3	-	-
		40	32	-	7	1	-
CARCASS ISLAND	MAY	35	22	3	6	6	-
		28	17	2	1	6	2
SAN CARLOS	MAY	27	23	-	4	-	-
		20	9	-	11	-	1
		56	48	1	7	-	-
MOODY VALLEY	MAY	3	2	1	-	-	-
BLEAKER ISLAND	MAY	19	18	1	-	-	-
		38	28	-	4	1	5
		25	21	1	-	-	3
		33	28	2	-	-	3
		40	33	1	-	-	6
		27	22	3	-	-	2
		39	37	2	-	-	-
		23	21	2	-	-	-
MOODY VALLEY	MAY	3	2	1	-	-	-
		3	2	-	-	1	-
		2	-	2	-	-	-


 For AG O i/c Agriculture.

MEMORANDUM

Refer to AGR 17/7.....

Date15th July 1980.....

It is requested that this number and date should be quoted.



From Ag Oi/c Agriculture

To
The Chief Secretary,
c.c. Senior Medical Officer,
Veterinary Officer,
Mr. S. Miller, Stanley.

Subject:- HYDATID DISEASE

I hereby submit the following particulars relating to Hydatid Disease found in sheep examined at the Stanley Butchery.

<u>STATION</u>	<u>MONTH</u>	<u>TOTAL</u>	<u>TOTAL</u>	<u>HYDATIDS</u>	<u>BOILS</u>	<u>BLADDERS</u>	<u>OTHERS</u>
		<u>EXAMINED</u>	<u>CLEAN</u>				
BLEAKER ISLAND	JUNE	40	36	3	1	-	-
		30	22	1	1	4	2
		30	27	2	1	-	-
		25	24	1	-	-	-
CARCASS ISLAND	JUNE	42	29	3	2	3	5
		25	18	5	-	-	2
		20	15	2	-	-	3
		36	20	7	-	3	6
		37	21	5	-	4	7
		14	6	2	1	4	1
		40	35	3	-	-	2
		48	32	4	3	4	6
MOODY VALLEY	JUNE	1	1	-	-	-	-
		1	-	-	1	-	-
		3	1	-	2	-	-
		4	3	1	-	-	-
F.I.Co. Ltd	JUNE	1	1	-	-	-	-
		1	1	-	-	-	-

[Signature]
For Ag Oi/c Agriculture

MEMORANDUM

9

Reference

Date ... 12th August 1980

It is requested that this number and date should be quoted.

AGR/7/7

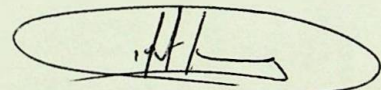
From Ag O i/c Agriculture

To cc The Chief Secretary
Senior Medical Officer,
Veterinary Officer,
Mr. S. Miller, Stanley.

Subject:- HYDATID DISEASE

I hereby submit the following particulars relating to Hydatid Disease found in sheep examined at the Stanley Butchery:-

<u>STATION</u>	<u>MONTH</u>	<u>TOTAL EXAMINED</u>	<u>TOTAL CLEAN</u>	<u>HYDATIDS</u>	<u>BOILS</u>	<u>BLADDERS</u>	<u>OTHERS</u>
CARCASS ISLAND	JULY	35	25	3	-	4	3
		25	14	3	1	2	5
PORT SAN CARLOS	JULY	35	33	-	-	-	2
		55	48	2	2	1	2
		30	23	-	4	3	-
SAN CARLOS	JULY	35	32	1	-	1	1
		50	48	-	1	1	-
		50	47	1	-	-	2
		35	33	-	1	-	1
		34	31	-	2	-	1
SPEEDWELL ISLAND	JULY	46	34	1	6	-	5
		10	3	-	7	-	-



For Ag O i/c Agriculture

MEMORANDUM

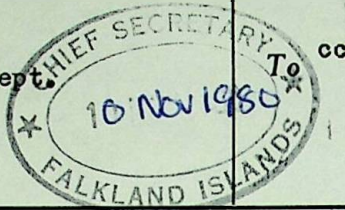
Reference

It is requested that this number and date should be quoted.

Ag-17/7

Date10th..November..1980.....

From Ag O i/c Agricultural Dept.



cc
The Chief Secretary,
Senior Medical Officer,
Veterinary Officer,
Chairman, Hydatid Committee.

Subject:- HYDATID DISEASE

I hereby submit the following particulars relating to Hydatid Disease found in sheep examined at the Stanley Butchery:-

<u>STATION</u>	<u>MONTH</u>	<u>TOTAL EXAMINED</u>	<u>TOTAL CLEAN</u>	<u>HYDATIDS</u>	<u>BOILS</u>	<u>BLADDERS</u>	<u>OTHERS</u>
NORTH ARM	SEPTEMBER	31	18	3	9	3	-
		40	18	2	17	2	1
		73	42	2	21	10	-
		51	25	2	26	-	-
		42	30	1	9	-	2
ROY COVE	SEPTEMBER	79	72	-	2	3	2
		30	27	-	1	2	-
		43	40	-	2	1	-
		78	73	1	2	2	-
		48	44	1	-	-	3
ROY COVE	OCTOBER	47	44	2	-	-	1
		18	14	1	2	1	-
		4	4	-	-	-	-
		1	1	-	-	-	-
		10	7	1	2	-	-
MOTLEY IS.	OCTOBER	46	29	1	15	1	-
		50	32	1	14	3	-
		69	46	-	22	-	1
		40	29	-	10	1	-
		64	41	-	19	-	4
		45	26	2	14	1	2
FITZROY	OCTOBER	16	11	1	3	-	1
		29	22	-	6	1	-
		55	44	1	6	2	2
		59	42	-	10	4	3
SALVADOR	OCTOBER	52	42	1	10	-	-
		38	37	-	-	1	-
		72	65	1	-	1	5
MOODY VALLEY	OCTOBER	3	2	1	-	-	-
		1	-	-	1	-	-

S. A. Bavel

Ag. O i/c Agricultural Dept.

MEMORANDUM

10

Reference Ag 177

It is requested that this number and date should be quoted.

Date 8th January 1981

From O i/c Agricultural Department

The Chief Secretary
c.c. Senior Medical Officer,
Veterinary Officer,
Chairman, Hydatid Committee.



Subject:-

HYDATID DISEASE

I hereby submit the following particulars relating to Hydatid Disease found in sheep examined at the Stanley Butchery:-

<u>STATION</u>	<u>MONTH</u>	<u>TOTAL EXAMINED</u>	<u>TOTAL CLEAN</u>	<u>HYDATIDS</u>	<u>BOILS</u>	<u>BLADDERS</u>	<u>OTHERS</u>
SALVADOR	NOVEMBER	31	30	-	-	-	1
		47	41	5	-	-	1
		66	58	2	1	1	4
		50	46	1	-	3	-
		40	36	3	-	-	1
MOODY VALLEY	NOVEMBER	4	0	1	1	-	-
		4	3	-	1	-	-
		1	0	-	1	-	-
		2	1	-	-	-	1
KEPPEL ISLAND	NOVEMBER	60	42	4	1	8	5
		20	15	3	-	-	2
		18	14	1	-	-	3
		63	51	3	-	1	8
CARCASS ISLAND	NOVEMBER	20	13	3	-	2	2
		46	36	3	-	3	5
		52	39	8	-	7	3
		20	16	1	2	1	2
		55	40	2	1	4	8
CARCASS ISLAND	DECEMBER	5	4	1	-	-	-
MOODY VALLEY	DECEMBER	3	1	-	1	-	1
		4	1	1	2	-	-
		3	1	1	-	-	1
KEPPEL ISLAND	DECEMBER	28	26	1	1	-	-
PORT SAN CARLOS	DECEMBER	56	46	-	4	3	3
		64	57	1	3	-	3
		40	35	-	3	1	1
		45	42	-	-	3	-
		76	71	1	1	1	2
		30	27	1	1	1	4
		49	37	1	2	4	5
FITZROY	DECEMBER	85	66	1	15	1	3
		91	61	3	16	5	6

For O i/c Agricultural Dept.

11

Disappointing figures from Stanley Butchery

The overall incidence of hydatid cysts in sheep offal at Stanley Butchery between June and December 1980 was 4.5%. This figure compares with 5.2% during the preceding six months but is still slightly higher than the figure for the same period in 1979.

From the table shown below, it is obvious that some farms are well on the way to eradication of cysts - San Carlos, Port San Carlos, Fitzroy, Roy Cove - but others are lagging way behind. It is farms like Johnsons Harbour, Carcass Island and Moody Valley which are acting as continued potential sources of infection and the high incidence of infection in sheep from these farms results in the depressingly high figures from the butchery.

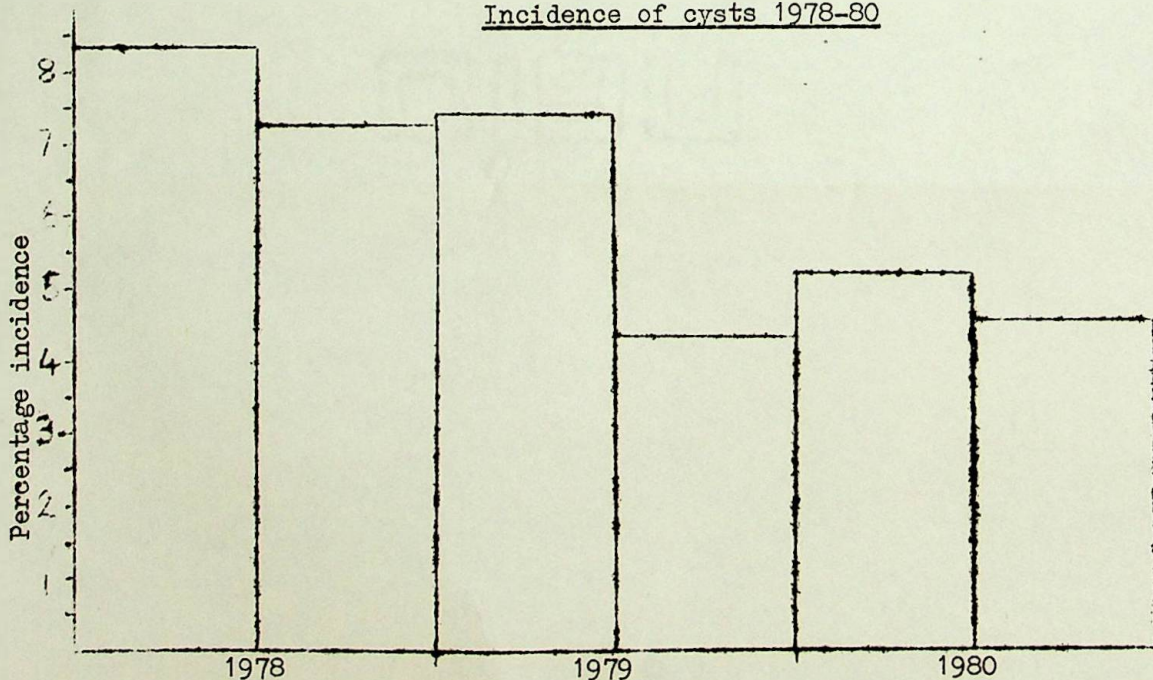
It is noticeable that the average age of the sheep sent to the butchery from these highly infected farms is very much greater than that from other farms. You may remember that a few months ago Salvador sent some geriatric 9 year olds to Stanley. These sheep had an incidence of over 9% but the most recent shipment had only 3.5% cysts because they were of a younger age. Quite apart from other considerations, in the interests of Hydatid eradication IT DOESN'T PAY TO KEEP GERIATRIC SHEEP.

Incidence of Hydatid Cysts found in sheep offal at Stanley Butchery between June and December 1980.

	Sets of offal	Cysts	Incidence
Bleaker Island	125	7	5.6
Motley Island	330	5	1.5
Speedwell Island	388	9	2.3
FIC Misc.	1	0	0
North Arm	237	10	4.2
Fitzroy	371	6	1.6
Salvador	344	12	3.5
Johnsons Harbour	203	35	17.2
San Carlos	204	2	1.0
Port San Carlos	480	6	1.3
Carcass Island	520	54	10.4
Keppel Island	189	12	6.3
Moody Valley	33	5	15.2
Roy Cove	358	6	1.7
Total	3783	169	4.5%



Incidence of cysts 1978-80



WHAT DOES THE UNION THINK OF THE ERADICATION CAMPAIGN?

Some months ago the General Secretary of the G.E.U. gave the Executive Committee's opinion of the hydatid eradication campaign. The following points were made:-

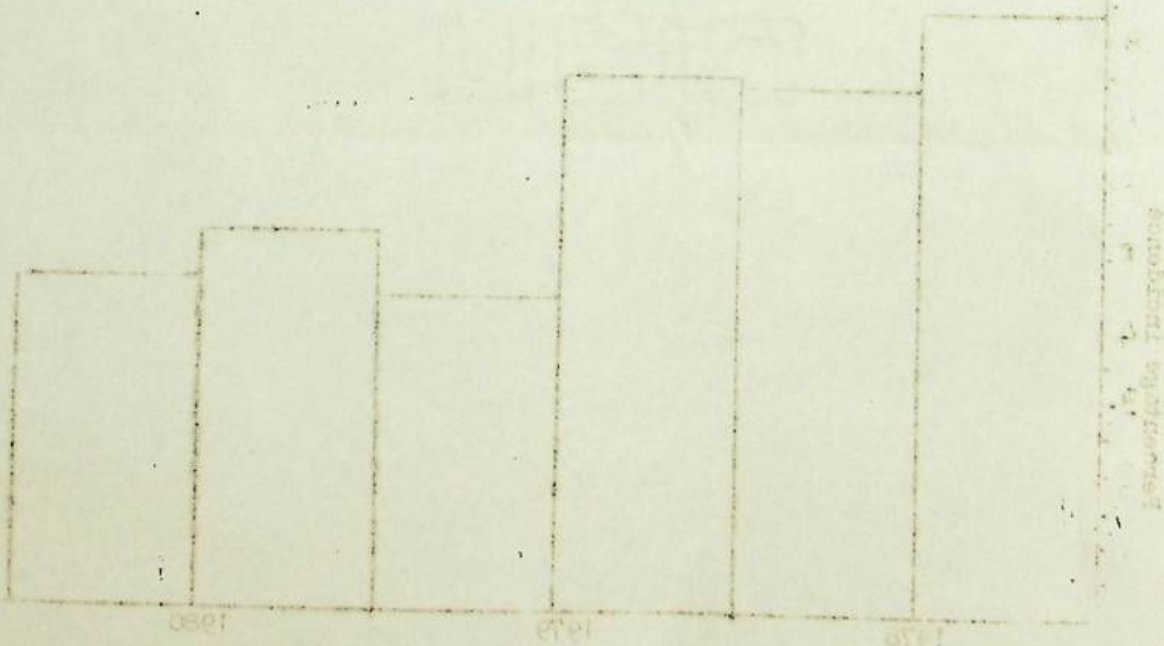
1. The Union give their full support to the eradication of the disease and can only stress that measures to control and eradicate it cannot be too stringent.
2. Control may be increased by the appointment of 'roving' inspectors and by the appointment of inspectors, OTHER than Managers, on farms.
3. It is felt by members that more pictorial propoganda be issued showing the 'ugly side' to keep people aware of the dangers of the disease. (Possibly by reproducing articles printed in New Zealand, Australia or Tasmania).
4. By the formation of Committees on farms. It is believed that one farm did in fact form a Committee some years ago. This could be done by the Union asking Delegates to do so, and the reporting of any incidents directly to Union H/Q, or to you, by individuals confidentially. There is always the risk of victimisation if the source of the information were to become known.

HYDATID COMMITTEE MEETS

On December 23rd 1980, a meeting of the Hydatid Committee was held in Barton House under the Chairmanship of Mr S Miller. Also present were Dr P Summers, Mr J Clement and Mr S Whitley. The main topic for discussion was a letter from H.E. the Governor which included notes and suggested alteration to the recommendations made by the Committee in August. The Committee considered possible ammendments and now await the outcome of the next Executive Council meeting.

R S Whitley, BVM&S, MRCVS

20th January, 1981



MEMORANDUM

Reference Agst/17

Date 6th March 1981

It is requested that this number and date should be quoted.



The Chief Secretary
Senior Medical Officer,
Veterinary Officer,
Chairman, Hydatid Committee.

From O i/c Agricultural Dept.

Subject:- HYDATID DISEASE

I hereby submit the following particulars relating to Hydatid Disease found in sheep examined at the Stanley Butchery:-

<u>STATION</u>	<u>MONTH</u>	<u>TOTAL EXAMINED</u>	<u>TOTAL CLEAN</u>	<u>HYDATIDS</u>	<u>BOILS</u>	<u>BLADDERS</u>	<u>OTHERS</u>
GOOSE GREEN	JANUARY	40	30	1	9	-	-
		40	34	1	5	-	-
		50	40	1	9	-	-
		36	25	-	9	-	2
		48	31	1	11	2	3
		34	27	1	3	-	3
		58	42	2	6	4	4
		55	31	4	13	3	4
JOHNSON HARBOUR	JANUARY	16	15	1	-	-	-
		20	16	1	-	3	-
		50	45	4	-	1	-
		55	52	3	-	-	-
		37	32	3	-	1	1
JOHNSON HARBOUR	FEBRUARY	55	45	1	2	5	2
		36	33	-	1	-	2
PORT LOUIS	FEBRUARY	1	0	1	-	-	-
		16	12	4	1	-	2
		28	24	1	1	2	-
		50	37	1	8	2	2
		66	51	7	7	1	-
		33	24	2	5	-	2
NORTH ARM	FEBRUARY	44	34	1	8	1	-
		55	41	4	9	1	-
		10	8	-	2	-	-
		32	22	-	8	-	2
		50	30	-	9	3	8
		62	38	-	10	7	7
MOODY VALLEY	JANUARY	33	26	-	5	2	-
		48	30	4	12	2	-
		49	23	2	14	4	6
		1	0	-	1	-	-
		2	1	-	1	-	-
MOODY VALLEY	FEBRUARY	2	1	-	-	1	-
		3	0	1	2	-	-

=====

for O i/c Agricultural Dept.

Ag 17/7

13



BLOOD TEST RESULTS SHOW SATISFACTORY POSITION

TESTS ON THE BLOOD SAMPLES taken from 80% of the Falkland Islands population between the ages of 3 and 65 have shown that 8 PEOPLE WERE POSITIVE. A person who is positive either has a hydatid cyst inside him or has recently had such a cyst removed by surgery.

In April and May 1980 approximately 1300 people gave blood samples which were sent to a World Health Organisation sponsored health centre near Buenos Aires where a number of tests and check tests were performed on each sample. This survey was a follow-up operation to the one carried out at the end of 1977, which revealed that, at that time, 3 people were positive to the tests. Since then most of those people have been thoroughly examined and successfully treated for the removal of the cysts.

But how accurate are the tests? Recently, Dr Peter Summers, in an interview on the FI Broadcasting Station, indicated that Dr Varela-Diaz - the doctor working for the WHO on our behalf - had said that if a check sample was taken and proved positive he would then be absolutely confident that the patient had got hydatid disease or had recently had a cyst removed.

But is it possible that a mistake could have been made with the samples? Such human errors are always possible - says Dr. Alison Bleaney - but to make absolutely sure that there has been no mistake we always take a check sample which goes away to BA and is subjected to the whole range of tests available. When these results come back we then consider the results together with the findings of a clinical examination of the patient and then, and only then, do we think of advising him or her to go to BA for further treatment.

But why do you need a clinical examination, surely the blood test is proof enough that you've got a cyst? Dr. Alison told me that although the blood tests show that you probably have a cyst present, they don't tell you WHERE it is. It could be in your lungs or liver - the most likely places - or in your heart, kidneys or even in your brain. The clinical examination, which X-rays and other highly complicated procedures, is aimed to show where the wretched thing is.

But why do you need to be operated on even if you have a cyst as long as you feel well? This is one of the nasty things about hydatid disease - said Dr Bleaney - very often people don't feel ill even though they have cysts growing inside them. Then suddenly the cyst may rapidly grow and press on one of the vital organs or, worse still, it may burst and release thousands of little bits, each of which then can form a new cyst. So in general, it's best to remove a cyst as soon as you know it's there.

But can't you use drugs to kill the cyst? Although several drugs are being tested, none has yet been proved to be really effective in permanently killing the cyst. So surgery is still the best and safest way.

But what about these 8 people who were positive to the tests? Do these figures mean that 8 new people have become infected since the last test in 1977? Dr Bleaney informed me that of the 8 people positive to the recent tests, 5 were positive in 1977 and most had been away for treatment. If you have an operation to remove a cyst and this is completely successful and there are no other cysts lurking around, then your blood test should revert to negative within a year after the operation.

So if we take 5 from 8 we are left with 3 people who are positive for the first time. But in fact, on investigation we found that one of these 3 was not in the Islands when the last test was done and the other two just were not tested for some reason or other.

So that means that there are no really new cases since the last test in 1977? On the assumption that there are no new cysts lurking away in the 5 people who have been operated on but are still positive, then the answer is YES. But we are still quite a long way from being able to relax and become complacent. It would only take one person to allow his dog to eat some infected offal and not dose his dog properly, for there to be an EXPLOSIVE outbreak of cysts in sheep and humans. So we must maintain our vigilance.

REMEMBER:

DON'T allow your dog access to sheep carcasses or offal. DO destroy all offal properly. DON'T allow your dog to roam unattended. DO exercise and feed your dog regularly. DON'T have geriatric sheep in your flocks.

STANLEY BUTCHERY RESULTS - January and February 1981

<u>Farm</u>	<u>Sets of offal</u>	<u>Hydatid incidence</u>	<u>Bladder cysts</u>
Goose Green	377	3%	2%
J. Harbour	254	5%	4%
Port Louis	292	6%	2%
North Arm	284	2%	6%
Moody Valley	8	13%	13%
	1215	4%	4%

Oh Dear! Again Moody Valley have a really high figure, but Johnson's Harbour are much better with 5% compared to 17% recorded previously. This show the value of getting rid of all old sheep as soon as possible. DON'T SAVE GERIATRICS - THEY'RE DANGEROUS.

R S Whitley, BVM&S, MRCVS

MEMORANDUM

Reference Agr/7/7

It is requested that this number and date should be quoted.

Date 8th April 1981



From O i/c Agricultural Department

To The Chief Secretary, Senior Medical Officer, Veterinary Officer, Chairman, Hydatid Committee.

Subject:- HYDATID DISEASE

I hereby submit the following particulars relating to Hydatid Disease found in sheep examined at the Stanley Butchery:-

Table with 8 columns: STATION, MONTH, TOTAL EXAMINED, TOTAL CLEAN, HYDATIDS, BOILS, BLADDERS, OTHERS. Rows include MOODY VALLEY, NORTH ARM, BROOKFIELD, SAN CARLOS, and SALVADOR for the month of MARCH.

Signature of O i/c Agricultural Dept.

MEMORANDUM

Reference A98/1/7.....

Date 28th May 1981.....

is requested that this number and date should be quoted.



From O i/c Agricultural Department

To The Chief Secretary,
c.c. Senior Medical Officer,
Veterinary Officer,
Chairman, Hydatid Committee.

Subject:- HYDATID DISEASE

I hereby submit the following particulars relating to Hydatid Disease found in sheep examined at the Stanley Butchery:-

<u>STATION</u>	<u>MONTH</u>	<u>TOTAL EXAMINED</u>	<u>TOTAL CLEAN</u>	<u>HYDATIDS</u>	<u>BOILS</u>	<u>BLADDERS</u>	<u>OTHERS</u>
SAN CARLOS	APRIL	54	40	1	8	1	4
		44	37	1	5	1	-
		34	24	2	8	-	-
		48	35	2	9	2	-
		46	37	2	7	-	-
		39	21	-	13	6	-
		53	38	-	14	-	1
		40	24	-	13	-	3
PORT SAN CARLOS	APRIL	7	4	-	2	1	-
		75	55	-	14	1	5
		40	24	-	10	6	-
		32	29	-	3	-	-
		51	47	-	4	-	-
MOODY VALLEY	APRIL	42	38	1	3	-	-
		2	-	-	2	-	-
		3	1	-	1	-	1
		2	-	-	2	-	-
		2	1	-	-	1	-
		1	1	-	-	-	-
		4	2	-	1	-	1
1	-	1	-	-	-		

O i/c Agricultural Dept.

MEMORANDUM

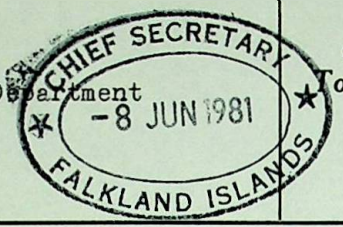
Reference Ag 17/7

Date 8th June, 1981

It is requested that this number and date should be quoted.

From O i/c Agricultural Department cc To

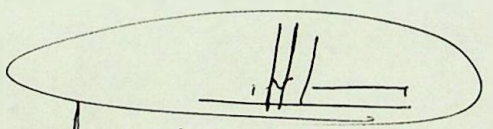
The Chief Secretary,
Senior Medical Officer,
Veterinary Officer,
Chairman, Hydatid Committee.



Subject:- HYDATID DISEASE

I hereby submit the following particulars relating to Hydatid Disease found in sheep examined at the Stanley Butchery:-

<u>STATION</u>	<u>MONTH</u>	<u>TOTAL EXAMINED</u>	<u>TOTAL CLEAN</u>	<u>HYDATIDS</u>	<u>BOILS</u>	<u>BLADDERS</u>	<u>OTHERS</u>
SAN CARLOS	MAY	2	1	-	-	1	-
PORT SAN CARLOS	MAY	22	17	-	1	-	4
		47	35	-	5	1	6
		48	35	-	9	4	-
		8	5	-	3	-	-
MOODY VALLEY	MAY	3	-	1	1	1	1
		1	-	-	1	-	-
		2	2	-	-	-	-
		2	1	-	1	-	-
GOOSE GREEN	MAY	2	-	-	1	-	1
		32	23	1	5	1	2
		41	34	1	6	-	-
		37	22	-	9	3	3
		33	28	1	3	1	-
		43	31	2	5	5	-
		40	31	2	7	-	-
25	14	-	10	-	1		
46	36	2	5	2	1		
PEBBLE ISLAND	MAY	4	4	-	-	-	-
		1	1	-	-	-	-


O i/c Agricultural Dept.

MEMORANDUM

Reference Agr. 17/17

It is requested that this number and date should be quoted.

Date 10th July 1981



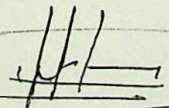
From O i/c Agricultural Department

To The Chief Secretary,
c.c. Senior Medical Officer,
Veterinary Officer,
Chairman, Hydatid Committee.

Subject:- HYDATID DISEASE

I hereby submit the following particulars relating to Hydatid Disease found in sheep examined at the Stanley Butchery:-

<u>STATION</u>	<u>MONTH</u>	<u>TOTAL EXAMINED</u>	<u>TOTAL CLEAN</u>	<u>HYDATIDS</u>	<u>BOILS</u>	<u>BLADDERS</u>	<u>OTHERS</u>
PEBBLE ISLAND	JUNE	31	27	1	-	1	2
		30	29	1	-	-	-
		35	34	1	-	-	-
		40	34	2	-	1	3
		24	23	-	-	1	-
		40	38	2	-	-	-
		49	46	-	-	2	1
		23	20	-	-	1	2
		40	39	-	-	-	1
		46	38	2	1	2	3
		34	33	-	-	-	1
MOODY VALLEY	JUNE	2	2	-	-	-	-
		2	0	-	1	1	-
		1	1	-	-	-	-
		1	1	-	-	-	-
		1	1	-	-	-	-
		1	1	-	-	-	-
		1	1	-	-	-	-
		2	2	-	-	-	-
		2	1	-	1	-	-
GOOSE GREEN	JUNE	1	0	-	1	-	-
		38	22	-	8	2	6
		20	11	-	8	-	1
		44	30	3	9	1	1


O i/c Agricultural Dept.

MEMORANDUM

Reference Agcl 7/7

It is requested that this number and date should be quoted.

Date 18th August 1981



From O i/c Agricultural Department

The Chief Secretary,
Senior Medical Officer,
Veterinary Officer,
Chairman, Hydatid Committee

Subject:- HYDATID DISEASE

I hereby submit the following particulars relating to Hydatid Disease found in sheep examined at the Stanley Butchery:-

<u>STATION</u>	<u>MONTH</u>	<u>TOTAL EXAMINED</u>	<u>TOTAL CLEAN</u>	<u>HYDATIDS</u>	<u>BOILS</u>	<u>BLADDERS</u>	<u>OTHERS</u>
GOOSE GREEN	JULY	1	-	-	-	1	-
		39	26	1	8	1	3
		42	31	1	10	-	-
		41	25	1	14	-	1
		31	24	-	5	1	1
		47	34	1	10	2	-
		45	38	3	1	2	1
MOODY VALLEY	JULY	3	-	-	3	-	-
		2	-	2	1	-	-
		1	1	-	-	-	-
		1	1	-	-	-	-
		1	1	-	-	-	-
		3	2	-	-	-	1
NEW ISLAND	JULY	31	23	-	1	2	5
		33	30	1	-	-	2
		20	18	-	-	-	2
		26	24	-	-	-	2
		43	36	-	-	1	6
		39	34	2	-	-	3
		59	48	1	4	2	4
WEDDELL ISLAND	JULY	3	3	-	-	-	-
		5	4	-	-	1	-
		12	12	-	-	-	-
		6	6	-	-	-	-
		8	6	1	-	1	-
		7	7	-	-	-	-
		1	1	-	-	-	-

O i/c Agricultural Dept.

MEMORANDUM

19

Reference HY/A11/AUG

It is requested that this number and date should be quoted.

AG 17/7



Date 3rd September 1981.

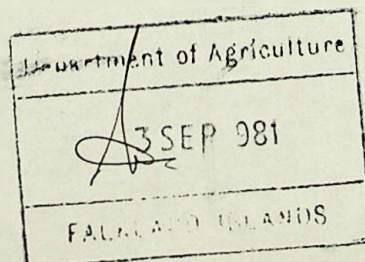
From The Agricultural Officer.

The Ch. Secretary.
The Senior Medical Officer.
The Veterinary Surgeon.
Chairman, Hydatid Committee.
File.

Subject:- Hydatid Disease.

I hereby submit the following particulars relating to Hydatid Disease found in Sheep examined at the Stanley Butchery:-

STATION.	DATE	TOTAL EXAM'D	TOTAL CLEAN	HYDATIDS.	BOILS	BLADDERS	OTHERS.
<u>New Is.</u>	AUG 4.	22	17	2	Nil	Nil	3
	5.	20	13	1	Nil	Nil	6
<u>Moody Valley.</u>	AUG 4.	2	1	Nil	1	Nil	Nil
	19.	1	1	Nil	Nil	Nil	Nil
	28.	2	1	Nil	Nil	1	NIL
<u>WEDDELL.</u>	AUG 4.	3	2	Nil	Nil	1	Nil
	5.	5	4	Nil	Nil	1	Nil
<u>GREAT IS.</u>							
	AUG 19	99	76	3	12	4	4
	21	55	35	5	8	1	6
	25	37	28	2	4	NIL	3
	26	45	25	2	10	Nil	8
	26	38	8	3	15	3	9
		329	211	18	50	11	39



111

To:- The Ch. Secretary.
The Senior Medical Officer.
The Veterinary Surgeon.
The Chairman, Hydatids Committee.
File.

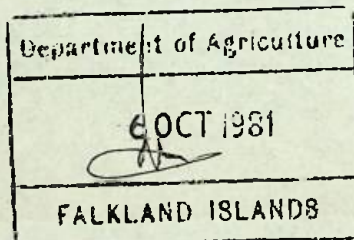
6th October

1981

Hydatid Disease.

I herewith submit the following particulars relating to Hydatid disease in sheep examined at the Stanley Butchery:-

Station	Date.	Total Exam'd	Total clean.	Hydatids.	Boils	Bladders	Others.
<u>Great Is.</u>	1/9/81	40	32 32	2 2	5	Nil	1 1
<u>Motley Is.</u>	4/9/	44	28	Nil	15	1	Nil
	2/9	45	28	Nil	14	3	Nil
	8/9	40	27	1	8	2	2
	9/9	35	23	Nil	10	1	1
	15/9	40	21	Nil	15	2	2
	16/9	50	28	2	17	Nil	3
	18/9	35	16	1	17	Nil	1
	22/9	46	35	1	10	Nil	Nil
	23/9	32	23	1	7	Nil	1
<u>Moody vally.</u>	4/9	2	Nil	Nil	2	Nil	Nil
	11/9	2	2	Nil	Nil	Nil	Nil
	22/9	2	1	Nil	1	Nil	Nil
<u>Triste Is.</u>	22/9	2	Nil	Nil	2	Nil	Nil
	23/9	23	16	Nil	7	Nil	Nil
	25/9	48	39	1	8	Nil	Nil
	29/9	42	25	1	14	2	Nil
	30/9	45	33	1	10	1	Nil
Totals		573	378 377	11	162	12	11
			(65.09%)	(1.92%)	(28.27%)	(2.09%)	(1.92)



HY/A11/OCT.

Pl. circulate
 Ag 17/17 B3 / XI

Agricultural Department,
 Stanley, Falkland Islands.

(2)

To:- The Ch. Secretary,

The Senior Medical Officer,

The GTU Veterinary Surgeon,

The Chairman Hydatids Committee.

File.

2nd November

1981



HYDATID DISEASE.

Herewith the particulars relating to Hydatid disease in Sheep examined at the Stanley Butchery:-

Date.	Station From.	Total Killed.	Total Clean	Hydatids	Boils	Bladders	Others
2.	10 Triste Is	59	49	1	9	Nil	Nil
7.	10 Do	70	41	1	21	3	4
9.	10 Do	56	37	1	12	3	3
13.	10 Do	43	24	5	13	Nil	1
20.	10 Do	2	2	Nil	Nil	Nil	Nil
28.	10 Do	2	Nil	Nil	2	Nil	Nil
Totals Triste Is		232	153	8 (3.4%)	57 (24.5%)	6 (2.6%)	8 (3.4%)
2.	10 Moody Val	2	2	Nil	Nil	Nil	Nil
9.	10 Do	3	1	Nil	1	1	Nil
13.	10 Do	1	1	Nil	Nil	Nil	Nil
21.	10 Do	2	2	Nil	Nil	Nil	Nil
28.	10 Do	2	2	Nil	Nil	Nil	Nil
Totals Moody Val.		10	8 (80%)	Nil	1 (10%)	1 (10%)	Nil
14.	10 Salvador.	45	39	Nil	3	Nil	3
16.	10 Salvador.	44	40	1	1	Nil	2
20.	10 Salvador.	36	24	2	2	2	6
21.	10 Salvador.	55	48	1	2	2	2
23.	10 Salvador.	56	45	7	1	Nil	3
27.	10 Salvador.	58	47	1	2	2	6
28.	10 Salvador.	28	23	Nil	2	3	Nil
Totals Salvador.		322	266 (82.6%)	12 (3.7%)	13 (4%)	9 (2.8%)	22 (6.8%)

Summary:-

Triste Is.	232	153	8	57	6	8
Moody Val.	10	8	Nil	1	1	Nil
Salvador.	322	266	12	13	9	22
Totals	564	427	20	71	16	30
		(75.71%)	(3.54%)	(12.58%)	(2.8%)	(5.3%)

(A.B. Monk) Agricultural Officer.

Se Gulate P/A

HY/A11/Nov.

**Agricultural Department,
Stanley, Falkland Islands.**

To:- Ch. Secretary.

Senior Med. Officer.

GTU Veterinary Surgeon.

The Chairman Hydatids Committee.

Ag. File.

..... 2nd December..... 1981..

Ag 17/7

Hydatid disease.

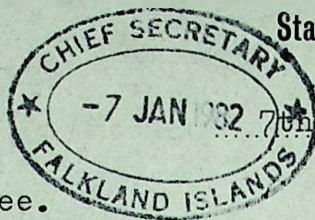
Herewith the particulars relating to Hydatid disease in sheep examined at the Stanley Butchery killed during November:-

Date.	Station	Total Killed	Total From	Total Hydatids. clean.	Boils.	Bladders.	Others.	
2nd	Fitzroy.	46	44	Nil	2	Nil	Nil	very poor.
3rd	Fitzroy.	37	22	1	9	4	1	Do
3rd	Fitzroy.	28	24	Nil	1	2	1	Do
4th	Fitzroy.	227	15	Nil	7	Nil	Nil	Do.
4th	Fitzroy.	37	22	1	9	4	1	Do.
Tot.	Fitzroy.	170	127	2	28	10	3	
			74.7%	1.17%	16.47%	5.88%	1.76%	
2nd	Moody Vally	2	2	Nil	Nil	Nil	Nil	
4th	Moody Valley.	1	Nil	Nil	1	Nil	Nil	
13th	Moody Val.	3	1	Nil	Nil	1	1	
18th	Moody Val.	3	2	Nil	1	Nil	Nil	
25th	Moody Val.	3	2	Nil	1	Nil	Nil	
Tot.	Moody Val.	12	7	Nil	3	1	1	
			58.33	Nil	25%	8.33%	8.33%	
6th.	Sandbar Is. & Tickle Is.	60	49	2	7	Nil	2	Good.
10th.	Do.	36	23	4	4	Nil	5	Do
11th.	Do.	55	30	4	16	1	4	Do
13th.	Do.	59	36	3	16	1	3	Do
17th.	Do.	36	27	1	5	1	2	Do
18th.	Do.	43	34	2	5	Nil	2	Do
24th.	Do.	1	1	Nil	Nil	Nil	Nil	Do
25th.	Do	1	Nil	Nil	XXXX1	Nil	Nil	Do
Tot.	Sandbar Is & Tickle.	291	200	16	54	3	18	
			68.73%	5.5%	18.56%	1.03%	6.18%	
20th.	Port San Carlos.	60	43	Nil	7	6	4	V. Poor.
24th.	Do.	39	34 32	1	1	4	1	Do
25th.	Do	34	30	1	1	2	Nil	Do
27th.	Do	75	61	2	8	1	3	Do
Tot.	Port San Carlos.	208	166	4	17	13	8	
			79.8%	1.92%	8.17%	6.25%	3.85%	
Summary all.		681	500	22	102	27	30	
			73.42%	3.23%	14.98%	3.96%	4.40%	

(Signature)

Ag. Officer.

P/A *Pl. ...*



To: Ch. Secretary.

Senio Medical Officer.
GTU Veterinary Surgeon.
Chairman, Hydatids Committee.

7th January 1982..

File.

Herewith are the particulars relating to Hydatid disease in Sheep examined at the Stanley Butchery in December 1981 :-

Killing Date.	Station from.	Total killed	Total clean.	Hydatid Cysts.	Boils.	Bladders.	Others.	Remarks.
Dec. 1.	Salvador	1	1 (100%)	Nil	Nil	Nil	Nil	/
Dec. 2.	Tickle.	1	1 (100%)	Nil	Nil	Nil	Nil	Wthrs.
Dec. 1.	KC	40	31	Nil	5	2	2	V. Poor Wthrs.
Dec. 2	KC	30	26	1	1	1	1	Do
Dec. 4	KC	71	54	Nil	15	1	1	Do
Dec. 9	KC	37	29	Nil	3	1	4	Do
Totals		178	140 (78.65%)	1 (00.56%)	24 (13.48%)	5 (2.81%)	8 (4.49%)	
Dec. 9	SUNDRY FIC	5	4 (80%)	1 (20%)	Nil	Nil	Nil	Wthrs.
Dec. 22	Do	7	7 (100%)	Nil	Nil	Nil	Nil	Lambs.
Dec. 4	KEPPELL	1	1 (100%)	Nil	Nil	Nil	Nil	Wthrs.
Dec. 2	G.Green.	5	4	1	Nil	Nil	Nil	Wthrs.
Dec. 23	G.Green.	33	21	2	8	2	Nil	Do
Dec. 30	G.Green.	60	35	Nil	17	4	4	Do
Totals		98	60 (61.22%)	3 (3.06%)	25 (25.51%)	6 (6.12%)	4 (4.08%)	
Dec. 2	Moody Val.	4	3	Nil	1	Nil	Nil	Wthrs
Dec. 9	Do.	3	2	Nil	Nil	Nil	1	Do
Dec. 16	Do.	3	2	Nil	1	Nil	Nil	Do
Dec. 23	Do.	4	3	Nil	1	Nil	Nil	EWES.
Dec. 30	Do	3	2	Nil	Nil	Nil	1	Mixed
Totals		17	12 (70.59%)	Nil	3 (17.65%)	Nil	2 (11.76%)	
Dec. 11	Fitzroy.	70	54	Nil	12	3	1	Mixed.
Dec. 12	Do	34	31	Nil	1	1	1	Do.
Dec. 15	Do	40	33	1	6	Nil	Nil	Do.
Dec. 16	Do	46	42	Nil	4	Nil	Nil	Do.
Dec. 18	Do	72	62	1	5	3	1	Wthrs.
Dec. 22	Do	42	28	Nil	12	Nil	2	Mixed.
Dec. 23	Do	17	13	Nil	4	Nil	Nil	
Totals.		321	263 (81.93%)	2 (00.62%)	44 (13.71%)	7 (2.18%)	5 (1.56%)	
Month Totals		629	489 (77.74%)	7 (1.11%)	96 (15.26)	18 (2.86%)	19 (3.02%)	

[Signature]
Ag. Officer